



ResilienceGuardTM
Business Continuity | Crisis Management

Demystifying Continuity

Truth & Myths

John Zeppos FBCI
April 2016

empowering preparedness globally

Kreuzplatz 2, CH-8032 Zürich, Switzerland | T/F +41 (0)44 266 10 62 | info@resilienceguard.ch

www.resilienceguard.ch

Business Continuity: Board Expectations

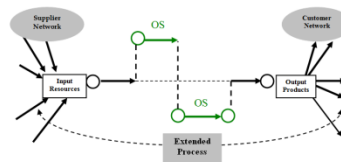


Certificate

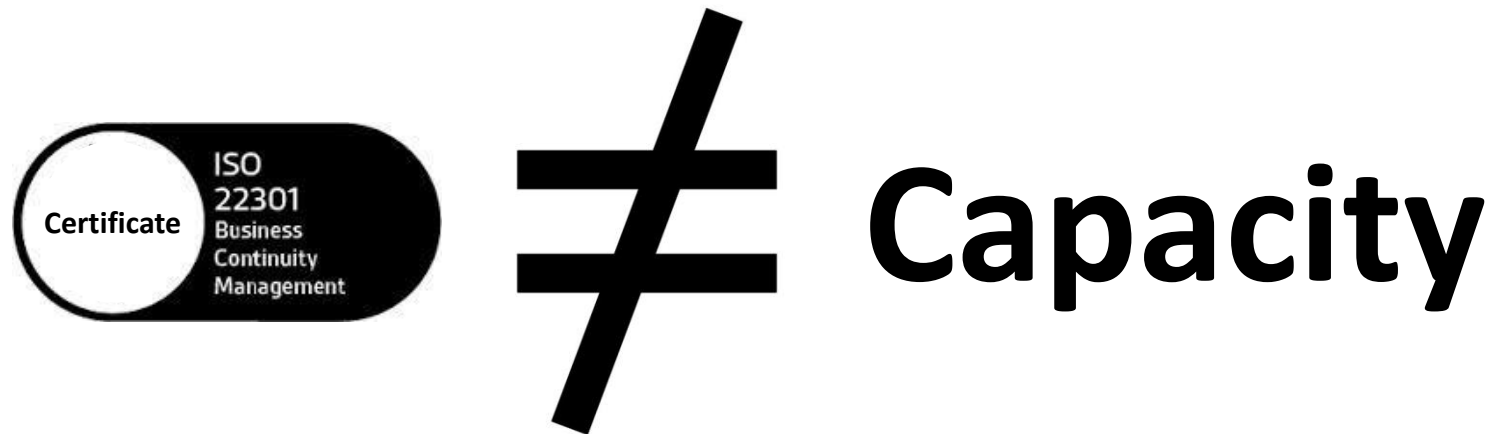
ISO
22301
Business
Continuity
Management



Business Continuity: Board Understanding

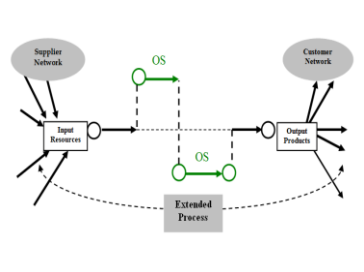
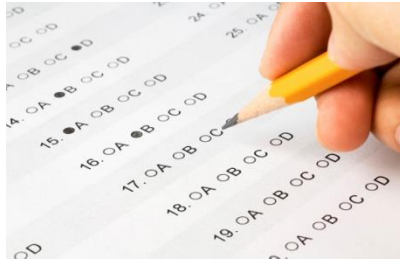
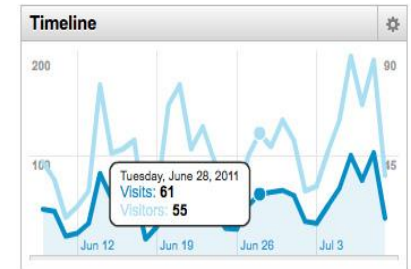


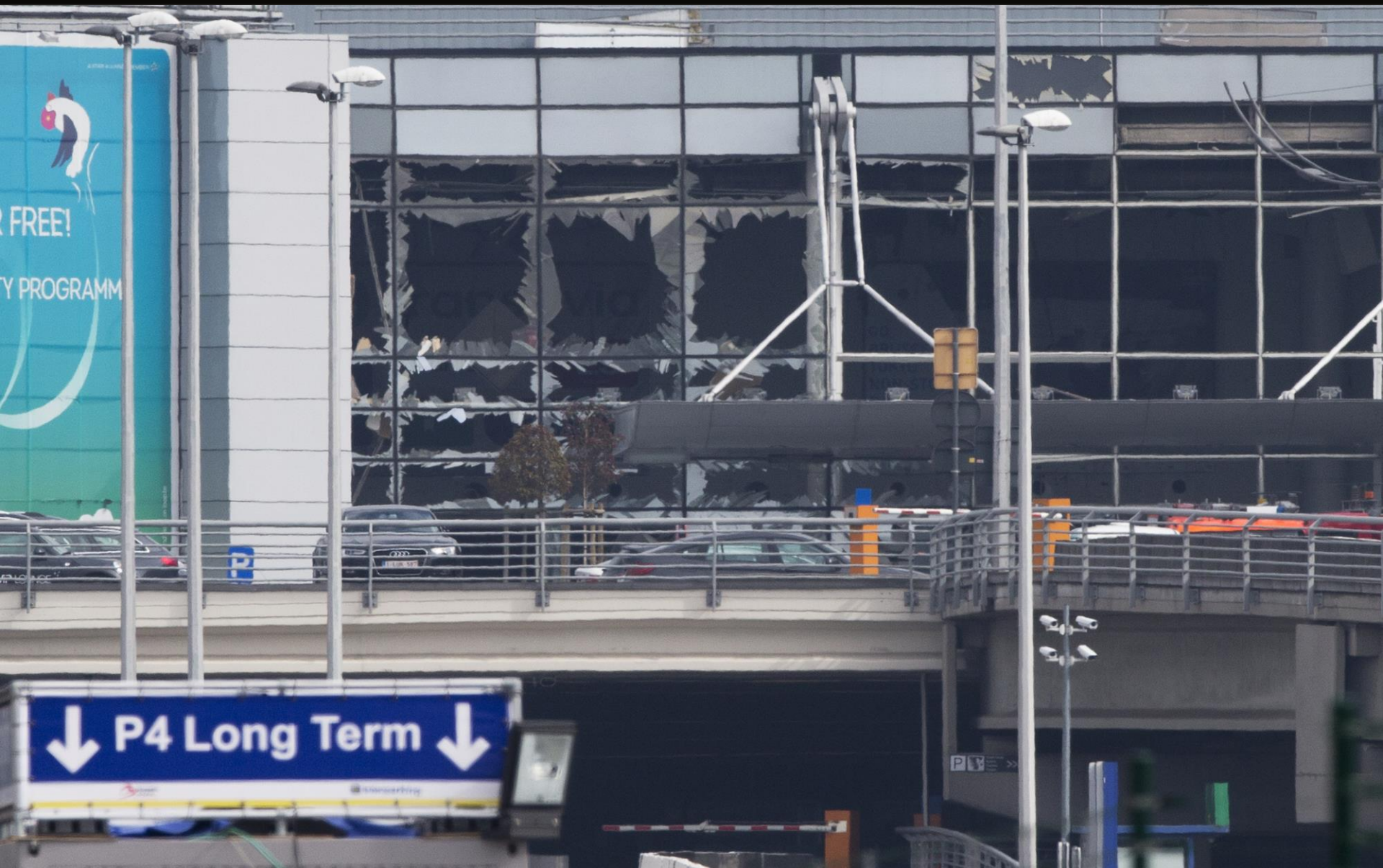
One thing is for sure



...or at least, neither necessarily nor always !

So what else is “capacity” ?







This is a clearly wrong perception !



Take the lead



Who would you really trust for your health ?



Vs



Internal Crisis events

Major
Accidents



Data
Thefts

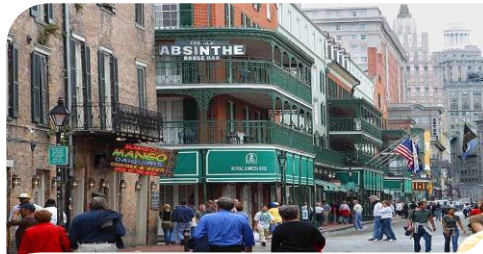


Product
Failure



External Crisis events

Natural Disasters



Terrorism



Social Breakdown



A Simple Guide for BCM

- Manage business continuity as an integrated program of work.
- Embed business continuity management into the company's culture, by using professional innovative awareness tools, methods and communication.
- Design the company's business continuity approach.
- Build company resilience.
- In the event of a disruption: Activate and deploy the (tested) plan.
- Maintain the program and plan: Testing, exercising, updating and reviewing.
- Infuse your passion to your internal audience !

Ingredients of any great BCM Team

- Qualified BCM Professionals
- Not amateurs but hobbyists
- At least one real Leader and one enthusiast in the team
- Understanding both Technical and Business aspects
- Good Knowledge of the neighboring disciplines
- Experienced in converged approach
- Extroverted people
- Great communicators Internally and Externally
- Tested but not Questioned
- Exercising Patience

Thank you

John Zeppos FBCI

Managing Partner

@JZeppos