



PCCW Global[®]

Cognitive Security in the Era of Always Online

Yiannis Giokas | VP R&D

HKT Here To Serve

a **PCCW** Group member

- PCCW Global is an international operating division of HKT, Hong Kong's premier telecommunications service provider, majority-owned by PCCW Limited.
- In 2014, HKT acquired CSL, Hong Kong's first mobile operator. Launched in 1983, CSL is at the forefront of delivering world-class network built above GSMA standards.
- PCCW Global is able to take local innovations in media, broadcasting, smart city solutions and reach out to global audience.

HKT

- ❖ Headquartered in Hong Kong
- ❖ Founded in 1925
- ❖ 2016 Revenue: US\$4.3 billion
- ❖ Employees: 18,900
- ❖ Number 1 Provider to consumers and enterprises
 - local quadruple-play services:
 - Fixed
 - Broadband
 - Mobile
 - Pay TV
- ❖ Listed on the Hong Kong Stock Exchange in 2011
- ❖ China Unicom is the 2nd largest shareholder of HKT

***Source: Gartner 2014**



542,000

Kilometres of
cable capacity
globally

5+
billion
minutes of voice
traffic annually

15.0 Tb/s
of global fibre
capacity



55 Presences



in IP Transit
services globally

**Network
presence in
over 3,000
cities and 150
countries**



We Serve...



**Fixed & Mobile
Network Operators**



**Cloud and
Application Providers**



**Internet
Content Providers**



**Internet Service
Providers**



**International
Enterprises**



**Media & Broadcast
Companies**

Our Solutions

Our Core & Value Added Services have been designed to give customers new capabilities, reach, efficiency and flexibility.

Value Added Services

Core Services



Flexible cloud-based IT and communications applications



Cloud



Connectivity and solutions for MNOs across technologies and global markets



Mobility Solutions



A single integrated platform delivered from the cloud for global UCaaS



Global UCaaS Solutions



Superfast delivery of content around the world



Media Solutions



Solutions to monitor, optimise networks and free up IT resources



Managed Network



Expertise, intelligence and infrastructure to secure assets from cyber attacks



Network Security

Voice Service

Data Service

Global Fibre and Satellite Network



Network Security

Our Global Security Crypteia services suite provides expertise, intelligence and infrastructure to secure information assets from cyber attacks

- Threat Management Service combines real-time network behaviour analytics and machine learning to proactively predict, discover and identify network security threats
- Firewall Services (managed and hosted) – offer security-rich monitoring, management and analytics
- Managed Anti-DDoS -routes traffic away from critical infrastructure assets during an attack
- Professional Security Services – analyst expert to help assess vulnerabilities and respond to incidents

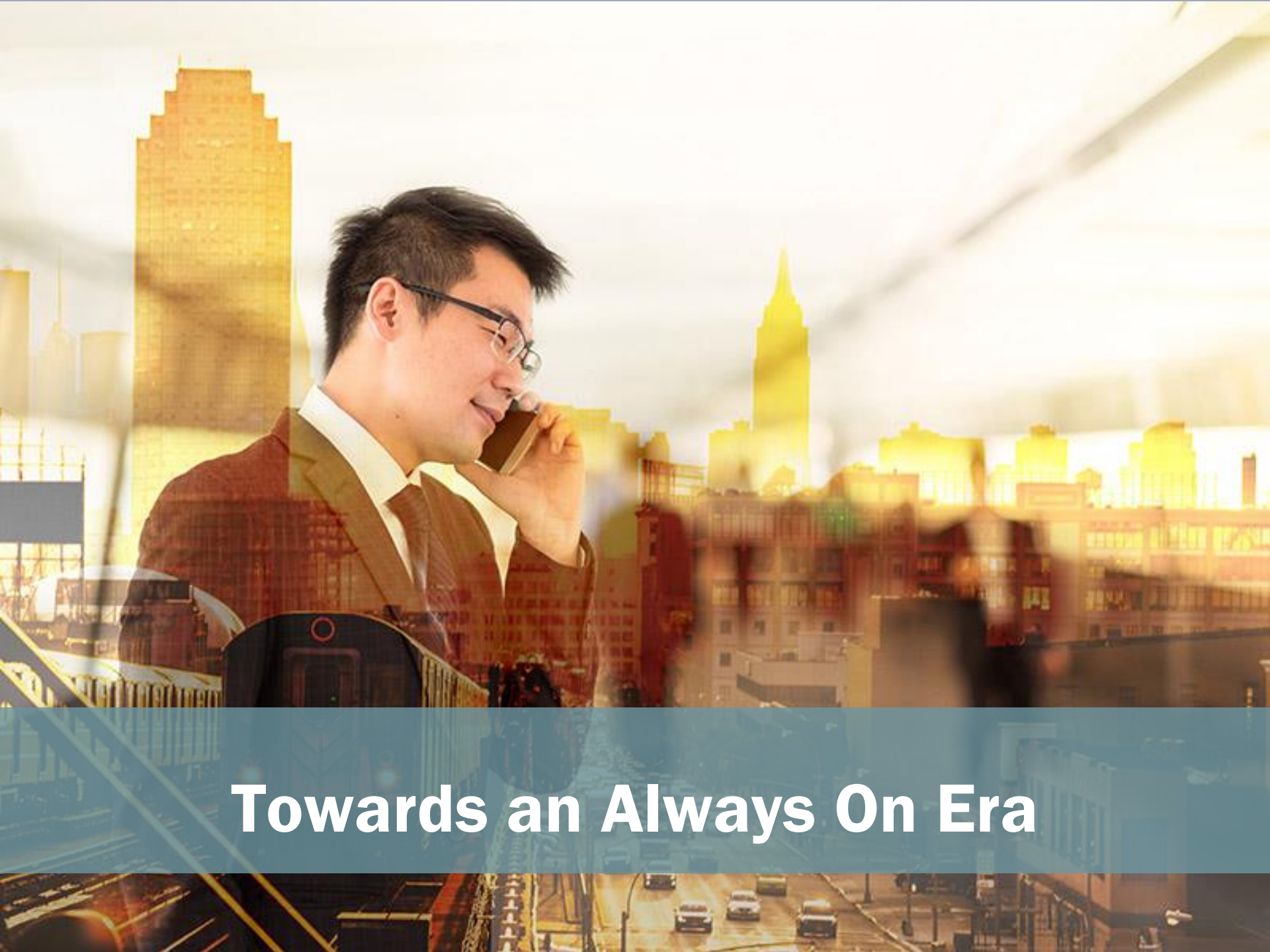
Threat Management Service

Managed Firewall

Hosted Firewall

Managed Anti-DDoS Service

Professional Security Services



Towards an Always On Era

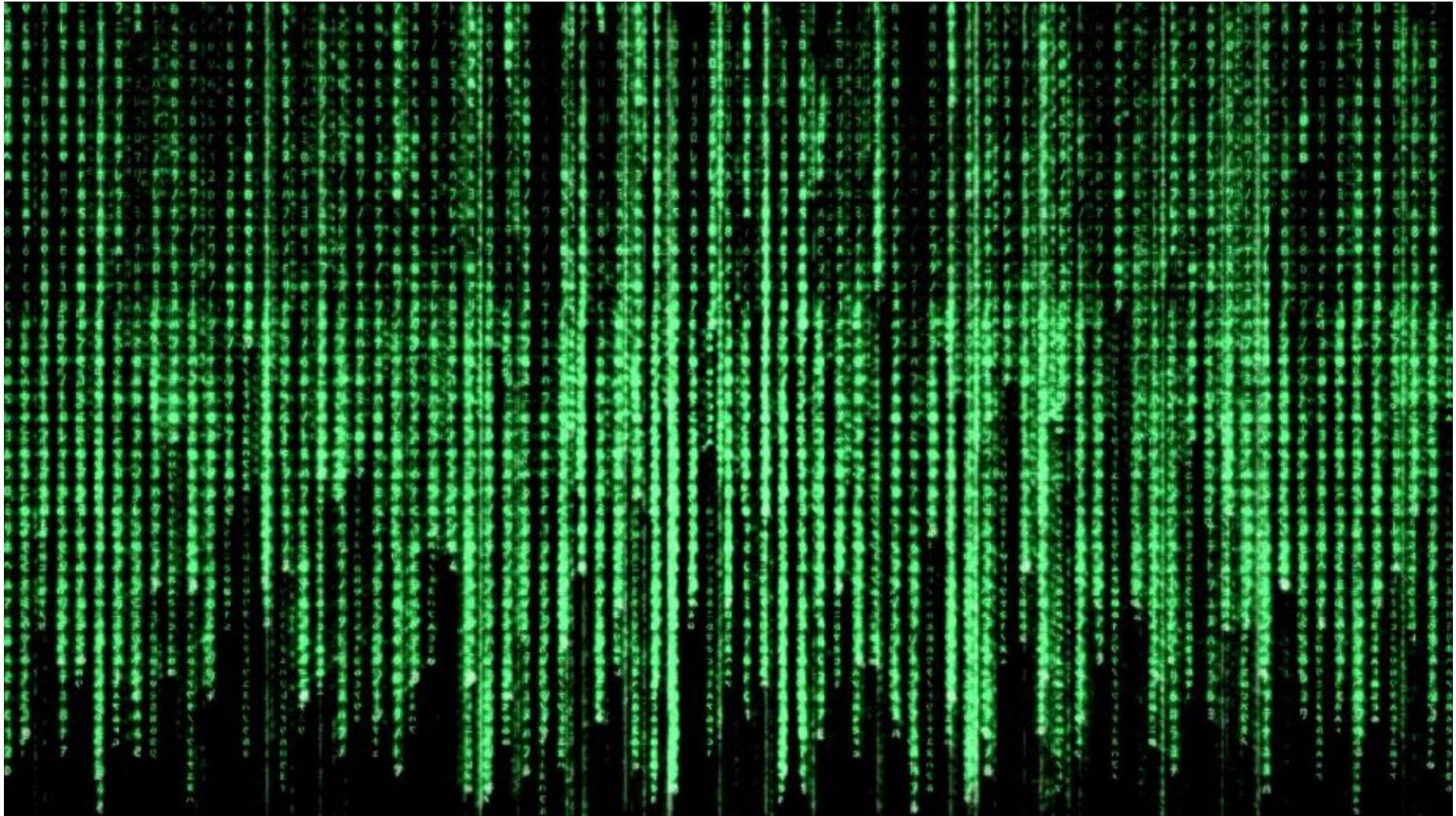


- By 2020 more that 50B IoT connected devices.
- Global internet community should grow from 3 in 2015 to 4.1 billion by 2020
- DDoS attacks will increase over the next 5 years from 6.6 million to 17 million.

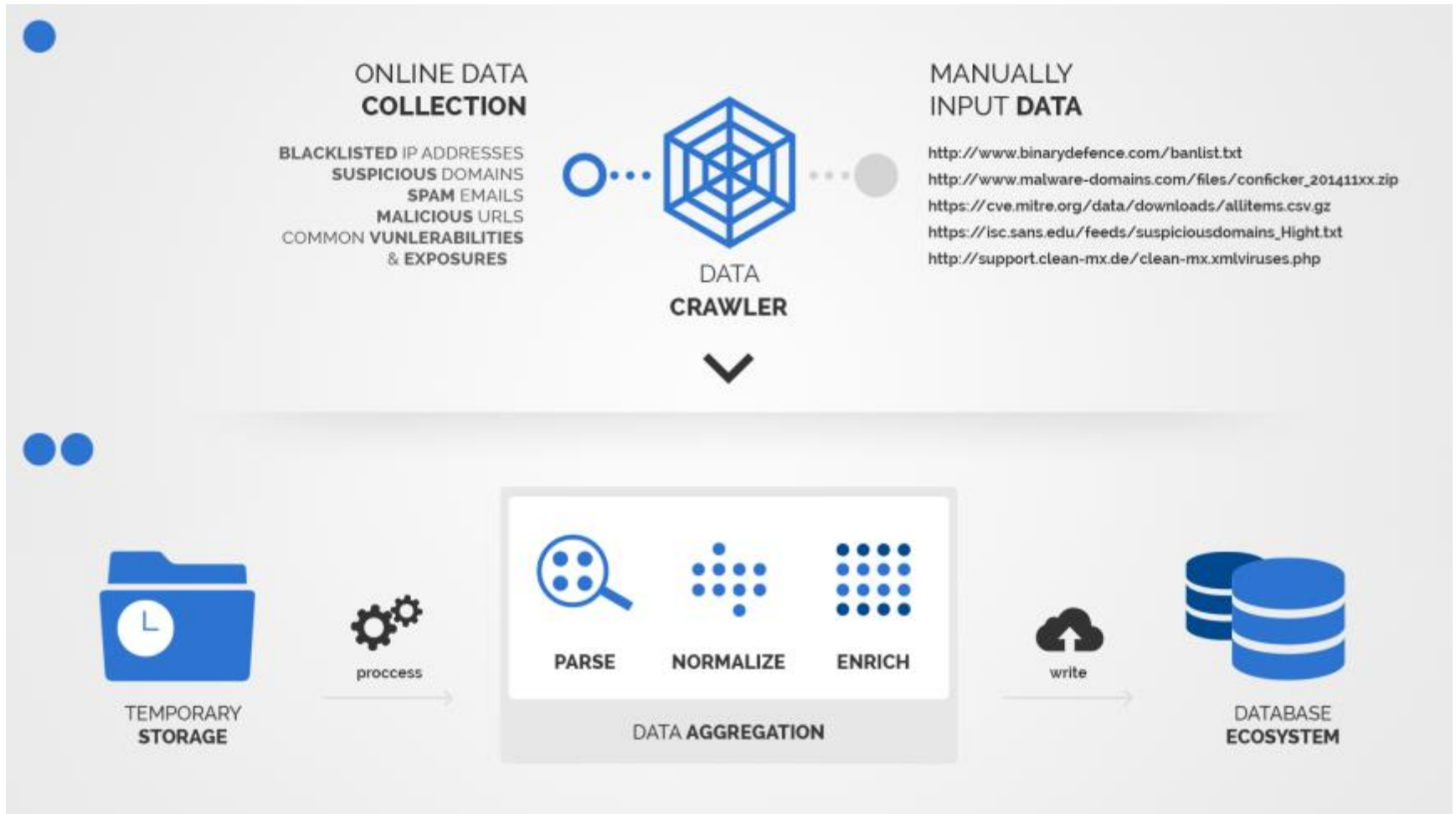
Source: Cisco

- There are 2 million open security jobs

Source: ISACA











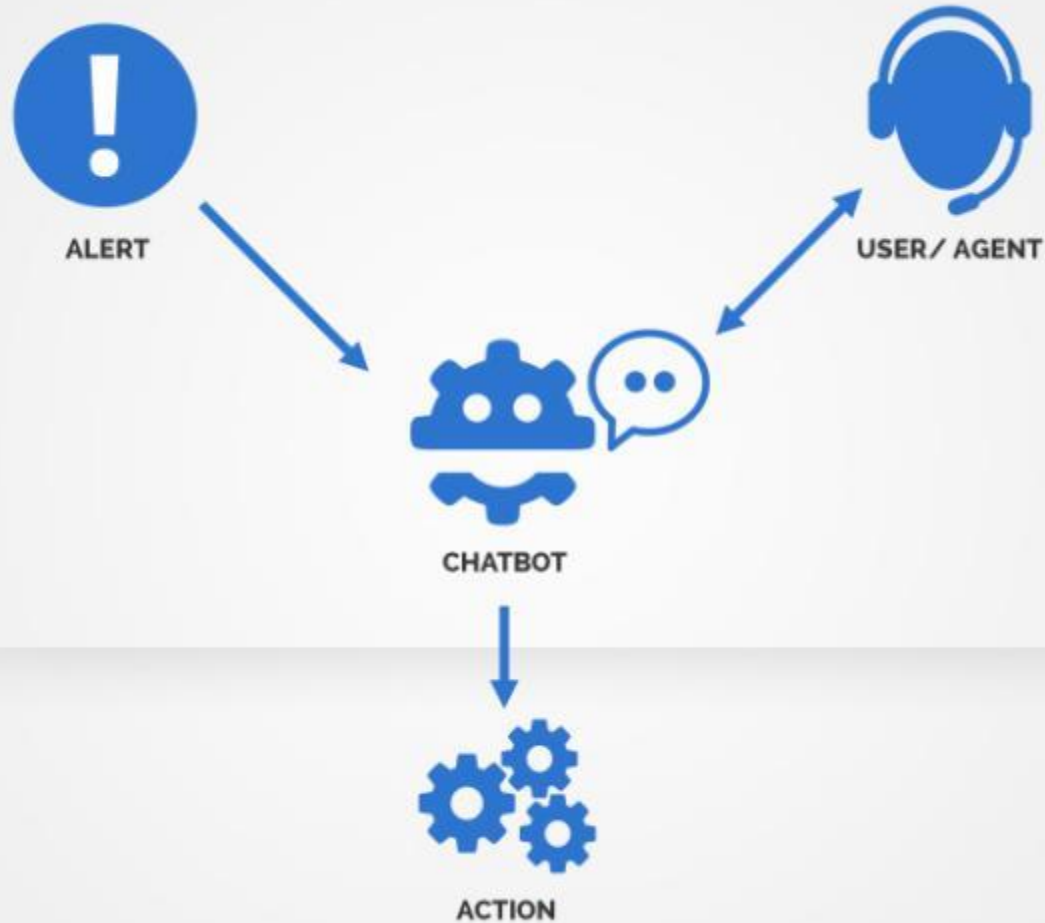
**ARTIFICIAL
INTELLIGENCE**



**MACHINE
LEARNING**



CHATBOTS





Regional Contacts

Africa

Johannesburg, South Africa

Tel: +27 11797 3300

Email: africa@pccwglobal.com

Americas

Virginia, United States

Tel: +1 703 621 1600

Email: americas@pccwglobal.com

Asia & CIS

Hong Kong

Tel: +852 2888 6688

Email: asia-cis@pccwglobal.com

Europe

London, UK

Tel: +44 (0)207 173 1700

Email: europe@pccwglobal.com

Paris, France

Tel: +33 (0)1 42 66 08 35

Email: europe@pccwglobal.com

SAMENA and Oceania

Dubai, United Arab Emirates

Tel: +971 (0) 4 446 7480

Email: mena@pccwglobal.com

Singapore

Tel: +65 6429 3988

Email: ssao@pccwglobal.com

Contact

ygiokas@pccwglobal.com

Thank You