

# Make Cloud Your Security Angel

Panagiotis Kouris  
CEO  
[pkouris@officeline.gr](mailto:pkouris@officeline.gr)

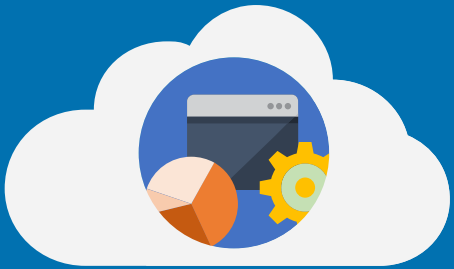
Manos Pepis  
CEO  
[pm@creative-ideas.gr](mailto:pm@creative-ideas.gr)



# Why our Cloud Services ?

## The best-in-class provider for IT solutions

Trusted Advisor



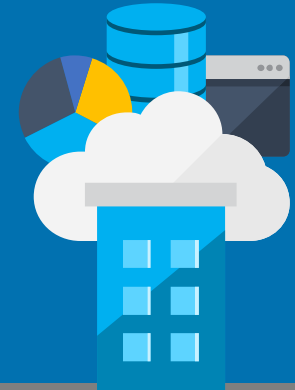
Heterogeneous support



Hybrid built-in



Unlocks Cloud services



More than 16.000 seats  
migrated on Office365.  
Customer's in Fortune 50 list  
20 years in Market !!!  
Top 5 partners in CEE for Azure  
BCDR Solutions  
... and more....

We support heterogeneous  
environments—Hyper-V,  
VMware, Windows, Azure,  
Apps, Office365 and  
physical servers—with  
cross-platform functionality

Design to quickly achieve a  
hybrid strategy by  
migrating  
on-premises workloads  
to cloud and achieve  
business goals.

Our solutions provide a  
direct path to the cloud,  
unlocking the innovation  
it delivers  
We are the experts at  
Cloud integration

# Before cloud migration concerns

Cloud Trend:

60%

Security as the main barrier  
for moving to the cloud

(Microsoft comScore Survey)

## Concerns

Security

Privacy

Compliance

Cloud Trend:

40%

Cloud would result in lack of  
data control

(Microsoft comScore Survey)

# After cloud migration...

Cloud Trend:

94%

Experienced security benefits they didn't previously have on-prem

(Microsoft comScore survey)

## Concerns

Security



Privacy



Compliance



Cloud Trend:

62%

Experienced increased privacy and data protection as the result of moving to the cloud



# THE MODERN WORKPLACE

Always connected,  
always moving

Ubiquitous  
collaboration

More devices,  
more data

# Mobility is the new normal



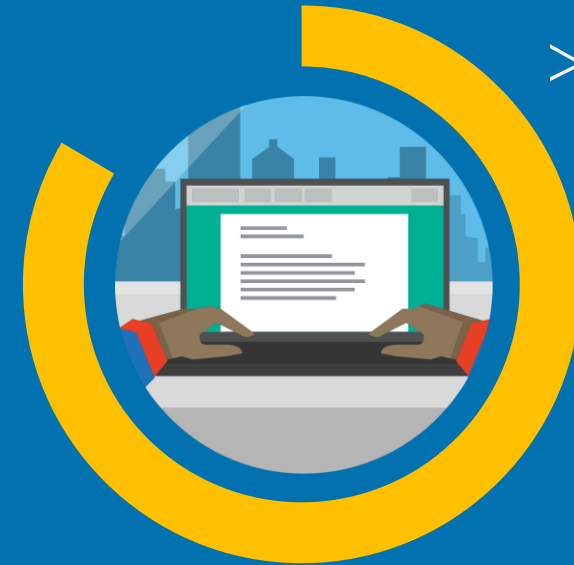
52%

52% of information workers across 17 countries report using three or more devices for work\*



90%

90% of enterprises will have two or more mobile operating systems to support in 2017\*\*



>80%

>80% of employees admit to using non-approved software-as-a-service (SaaS) applications in their jobs\*\*\*

\* Forrester Research: "BT Futures Report: Info workers will erase boundary between enterprise & consumer technologies," Feb. 21, 2013

\*\* Gartner Source: Press Release, Oct. 25, 2012, <http://www.gartner.com/newsroom/id/2213115>

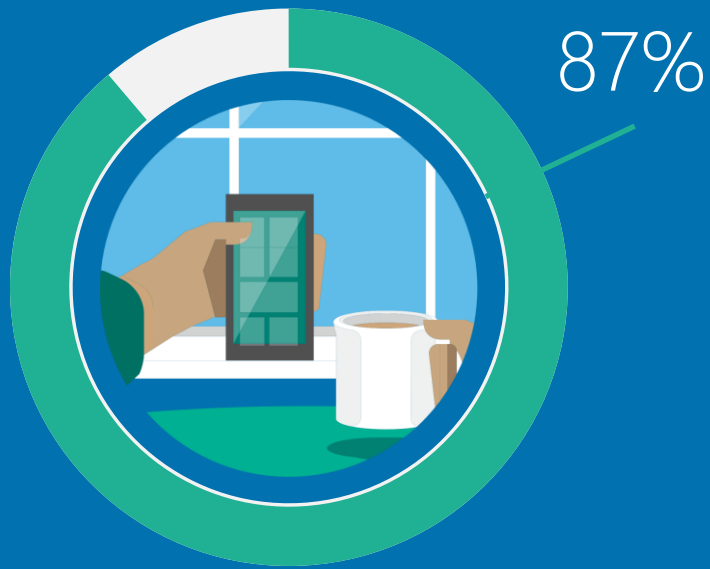
\*\*\* <http://www.computing.co.uk/ctg/news/2321750/more-than-80-per-cent-of-employees-use-non-approved-saas-apps-report>



**OFFICE LINE**  
Professional IT Solutions



# Data protection realities



87% of senior managers admit to regularly uploading work files to a personal email or cloud account.\*



58% have accidentally sent sensitive information to the wrong person.\*



Focus on data leak prevention for personal devices, but ignore the issue on corporate owned devices where the risks are the same

# Enabling great user experiences with security and control

## Enable seamless collaboration

Provide users with tools to stay in sync anytime, anywhere

## Protect your data

Enable strong authentication, encryption and access controls

## Manage all your users' devices

Manage devices and apps for PC's Mobile devices

## Unify your environment

Leverage existing investments for identity & device management



# Improve security



## Protect users

- Multi-factor authentication
- Leaked credentials reporting



## Intelligent analysis

- Machine learning
- Security reports
- User behavior analysis



## Guard apps

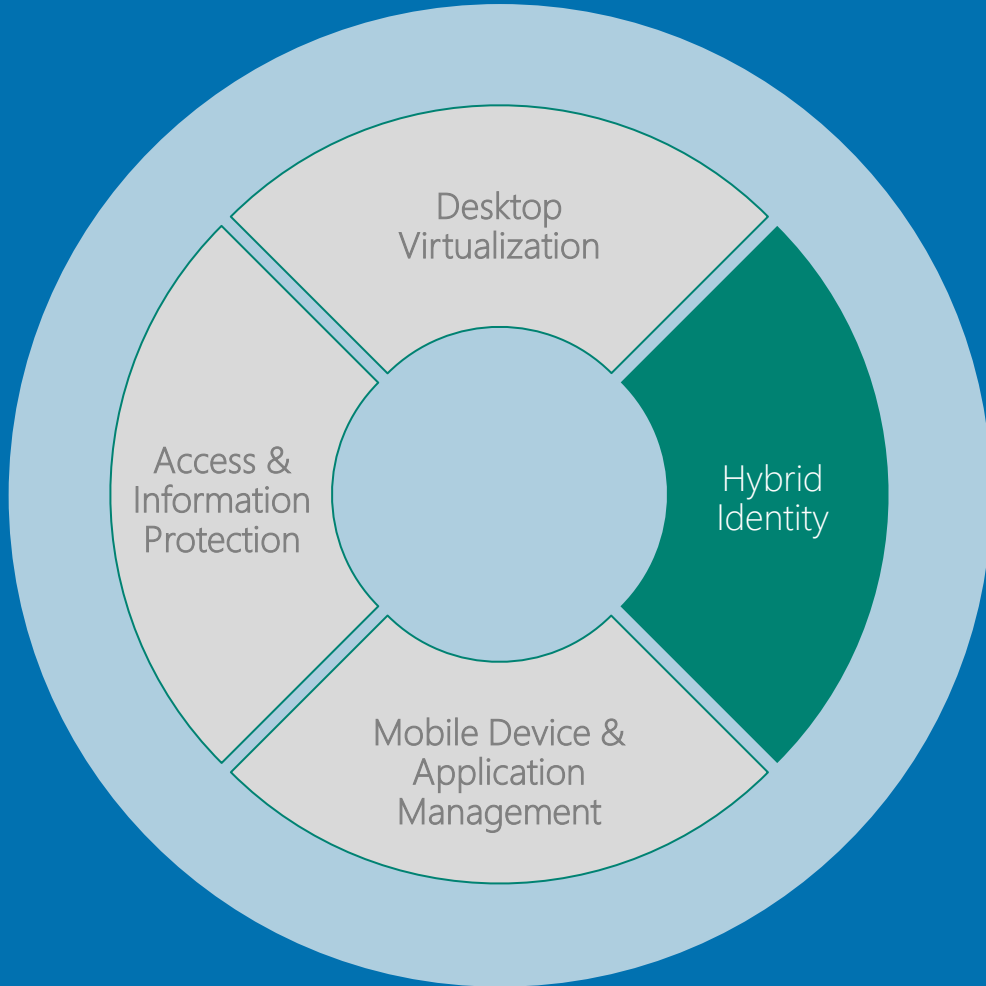
- Conditional access
- Secure remote access

# Identity and access management

- ➔ One common identity
- ➔ Simplify management
- ➔ Improve security



# One User. One Identity. Everywhere.



- ▶ Single sign-on
- ▶ Self-service experiences
- ▶ Common identity
- ▶ Conditional access
- ▶ SaaS applications





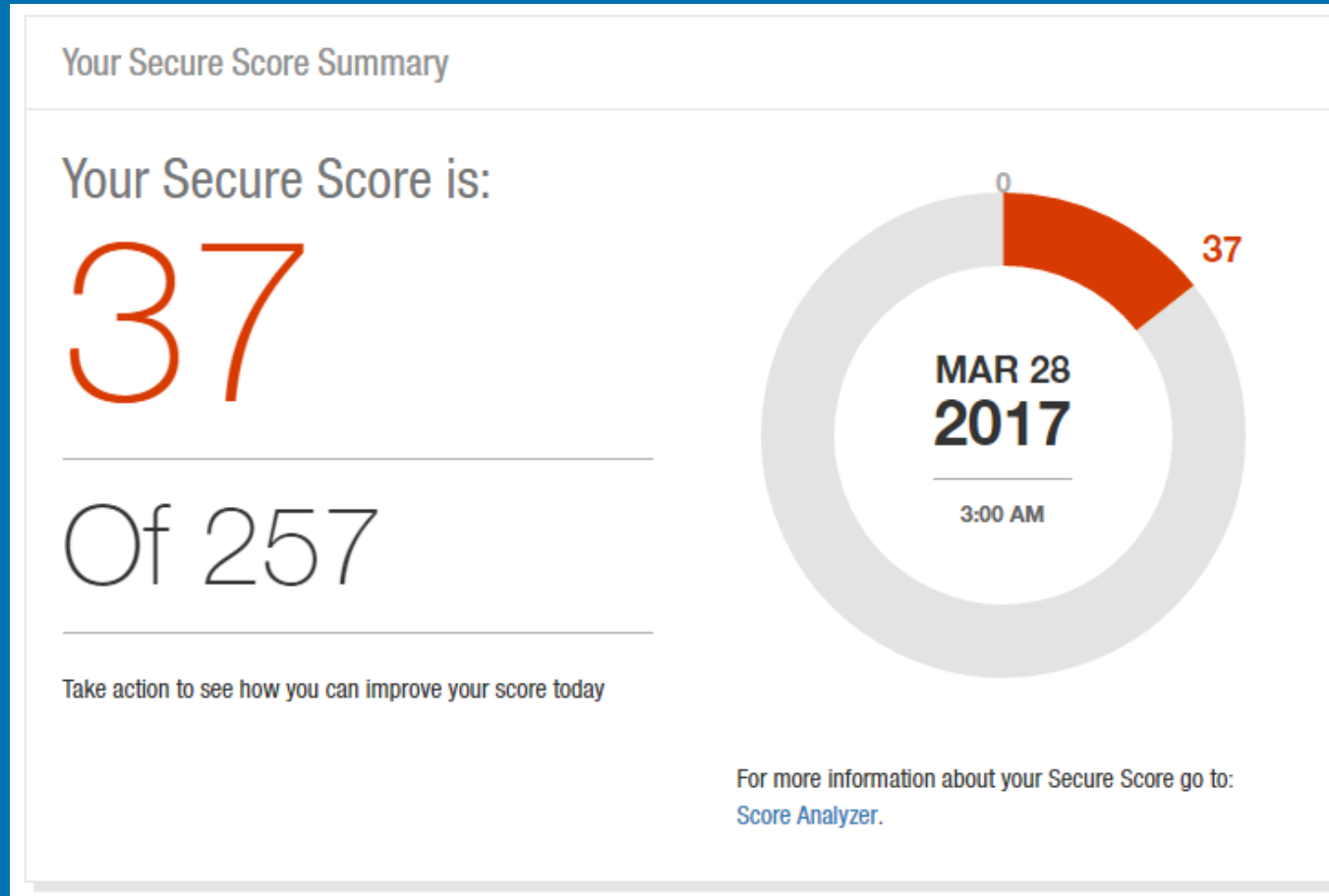
# Know your Office 365 Secure Score

- Do you know how you'd be rated if someone were to evaluate your security configuration?

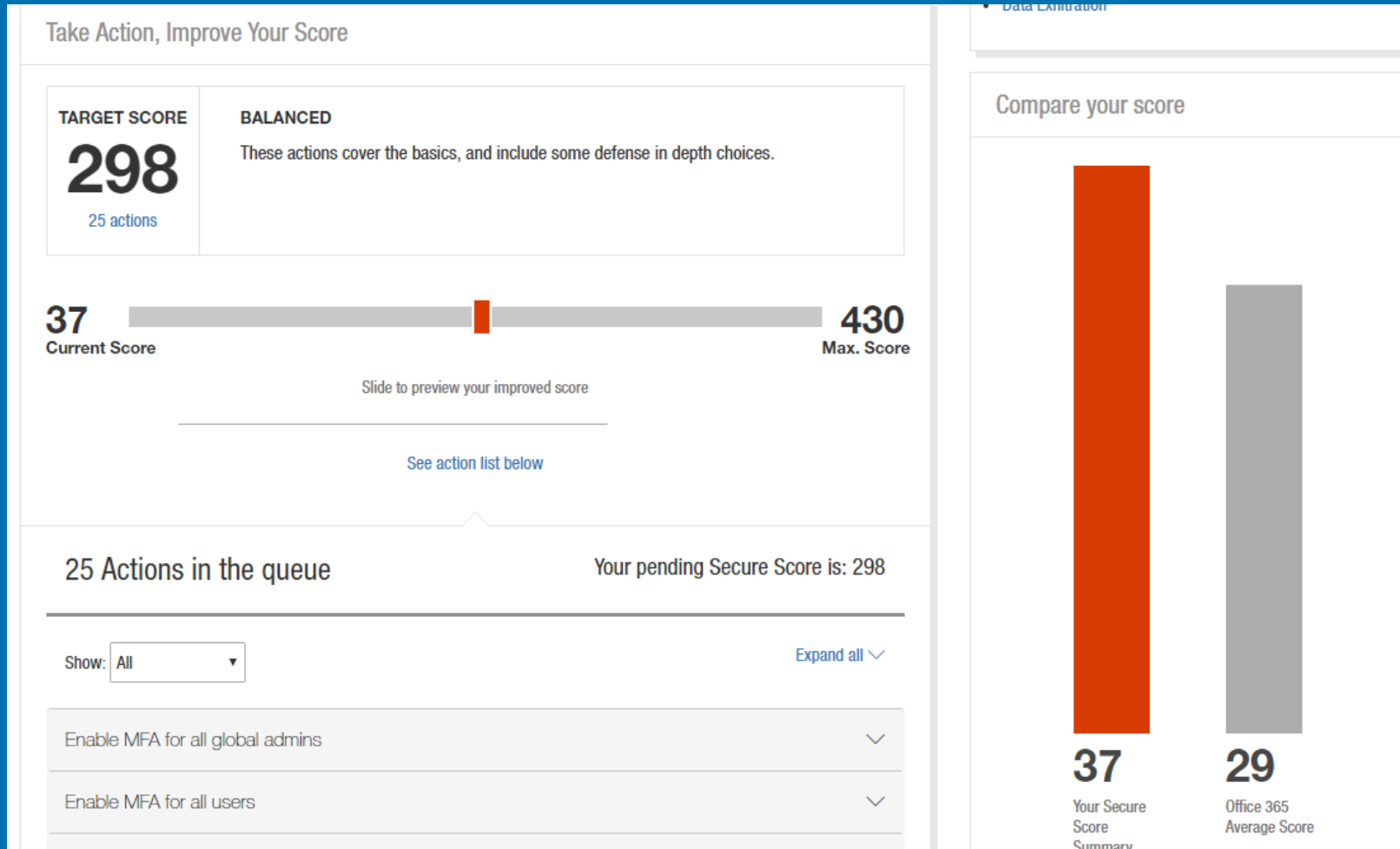
we're pleased to introduce Secure Score  
- a new security analytics tool.



# Secure Score Summary

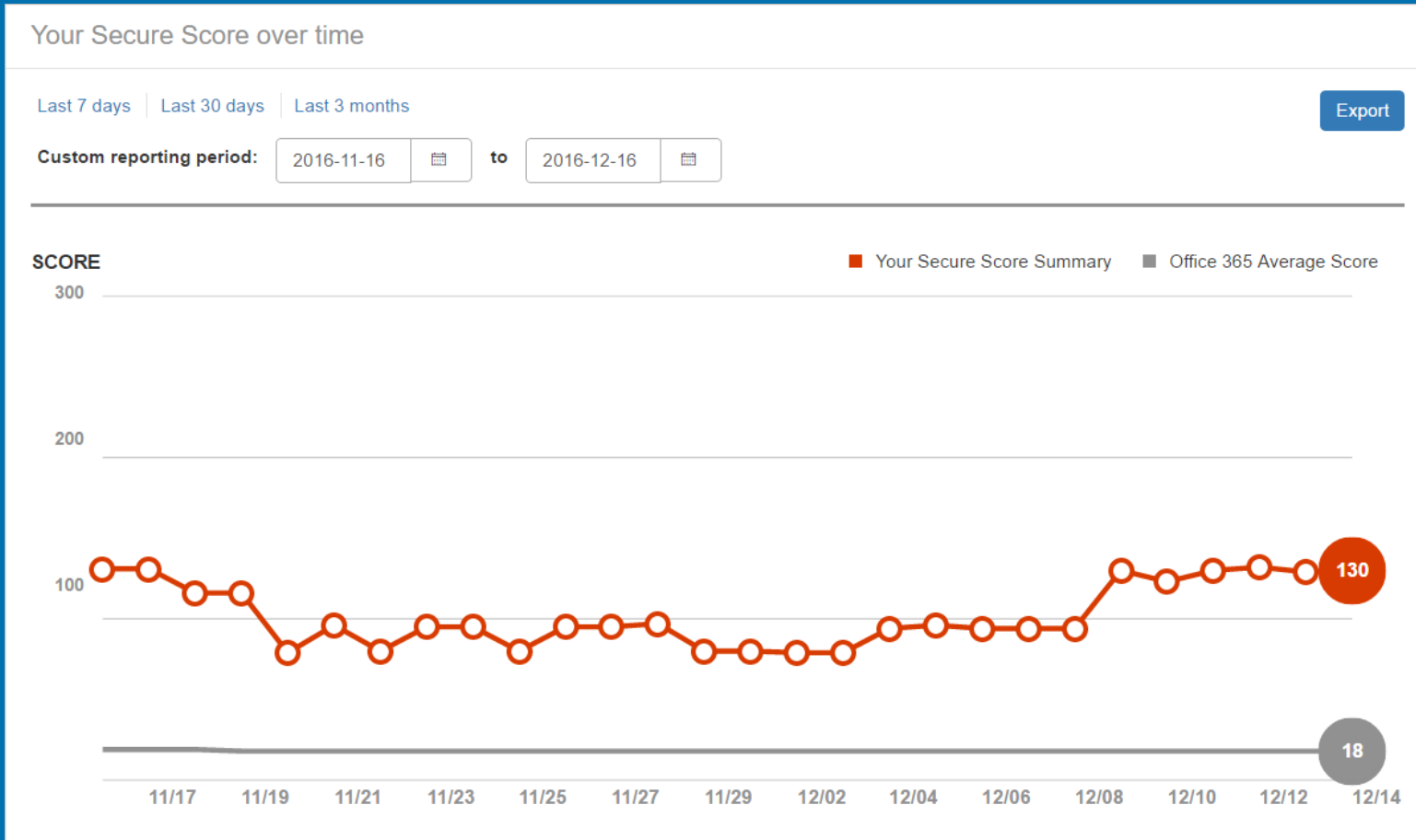


# Take Action, Improve Your Score

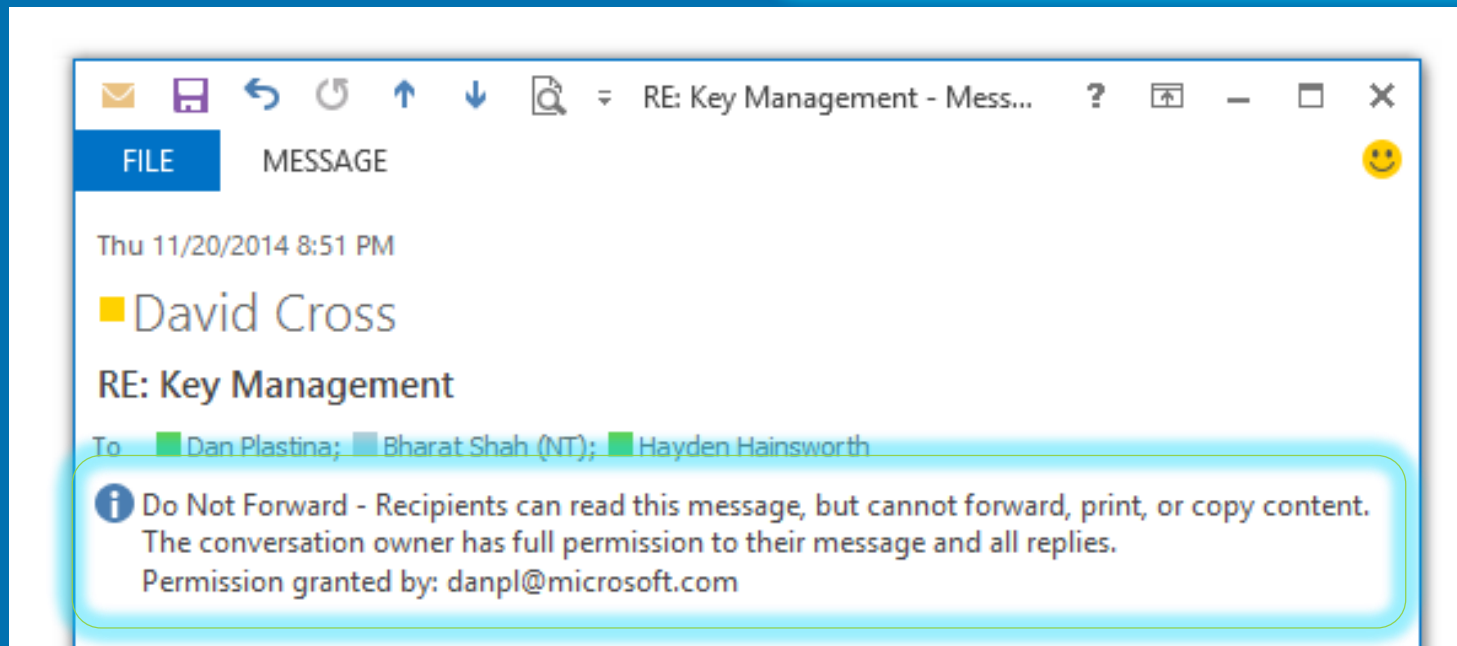
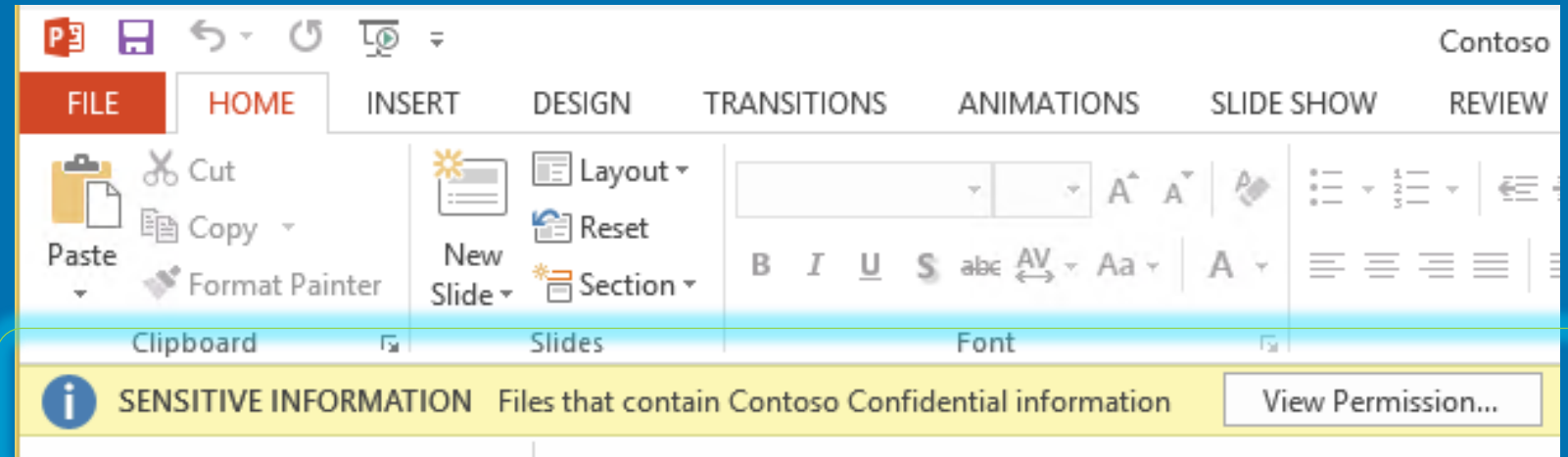




# Score Analyzer



# Office apps integrates with RMS



# Abnormal Behavior based on VPN and Internal Chain-of-Events

Tue 13.12.13  
9:16 > 10:23

## Abnormal Behavior based on VPN and Internal Chain-of-Events

Idan Plotnik who normally works in Leicester, UK and remotely connects from Leicester, UK via VPN, exhibited abnormal behavior based on the following:

- Connected from Germany, via VPN for the first time.
- Connected from Germany within a time period of 49 minutes since last seen in Leicester, UK.
- Accessed 5 abnormal resources within the corporate data-center located in Germany.



Notes



Email



Export to Excel



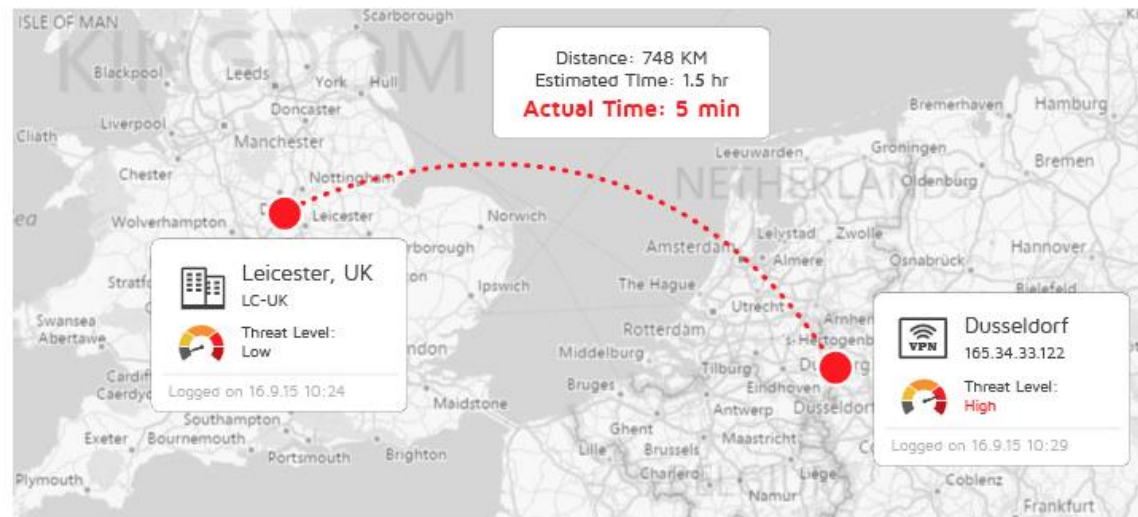
Details



Open

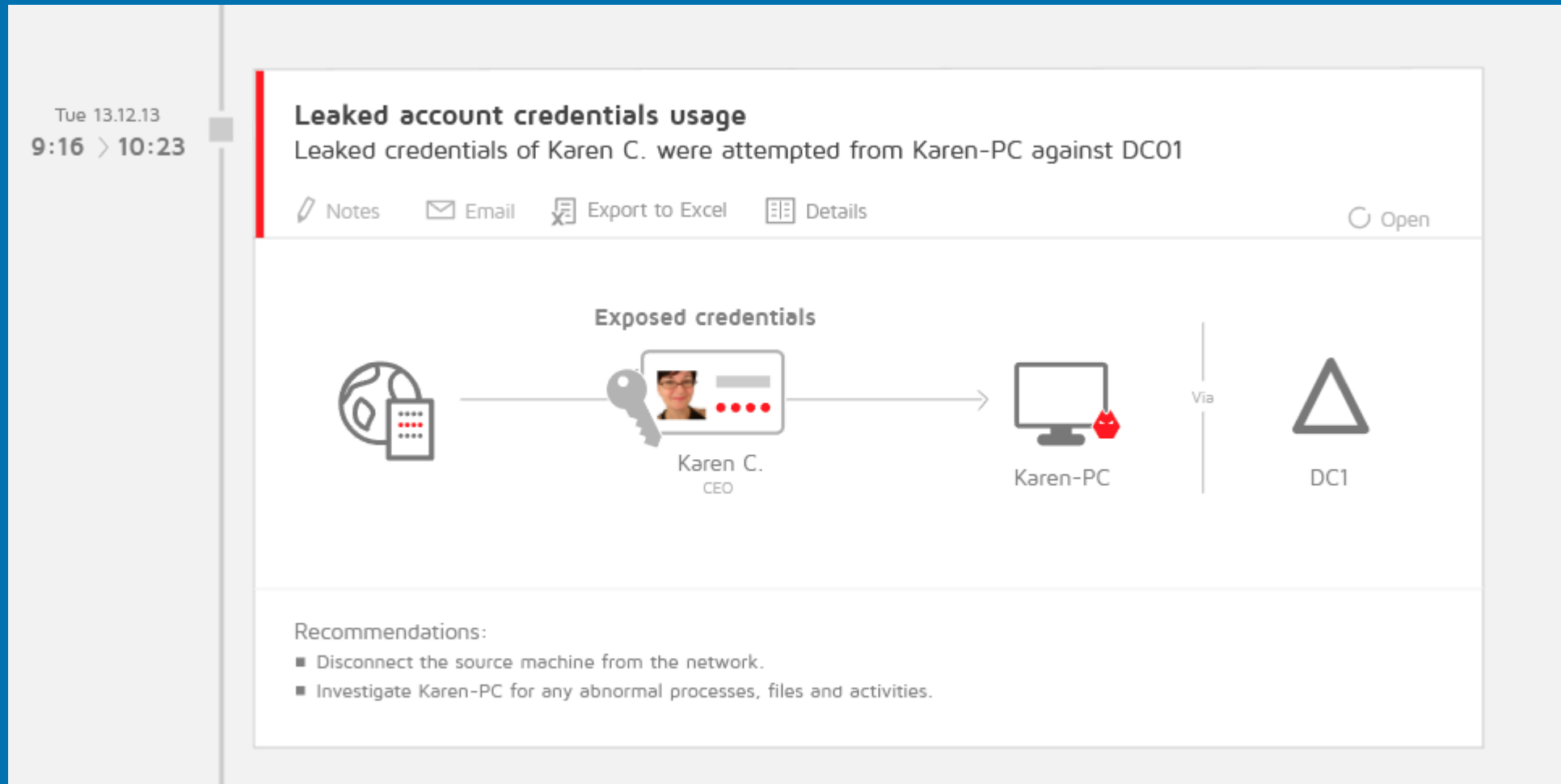


Idan Plotnik  
CEO





# Failed Logon with Stolen Credentials



# Technology trends: driving cloud adoption

ORGANIZATIONS ARE EAGER TO REALIZE CLOUD BENEFITS

## Cloud Trend:

75%

of CIOs will embrace a cloud-first strategy in 2017

(IDC CIO Agenda webinar)

## Drivers

### Agility



2 weeks

to deliver new services  
vs. 6-12 months with  
traditional solution

(Case Study: HarperCollins  
Publishers)

### Scale



Scale from

30,000 to  
250,000

site visitors instantly

(Case Study: Autocosmos)

### Economics



\$25,000

in the cloud would cost  
\$100,000 on premises

(Microsoft Azure BI Team, STMG  
Proof Points Central)



**OFFICE LINE**  
Professional IT Solutions

# Cloud helps organization to increase security

## **Benefits** realized

94%

experienced security benefits they didn't previously have on-premise

62%

said privacy protection increased as a result of moving to the cloud





**OFFICE LINE**  
Professional IT Solutions



THANK YOU 😊