

ΣΥΓΝΩΜΗ ΚΥΡΙΕ

ΠΟΙΟΣ ΕΙΣΤΕ ???

Unboxing the identity management

Panagiotis Kouris
CEO @ OFFICE LINE SA
pkouris@officeline.gr

Celebrating *20 years* of maximizing business value





AWARDS

The dynamic profile and business strategy of the company have been reflected by various awards and distinctions **won**:



Microsoft Summit '17:

Office Line amongst the Top Microsoft partners and recognized as **“Lifetime Customer Value in Azure”** for its outstanding performance and catalyst influence for implementing Azure based solutions.



**Digital Transformation
A W A R D**
InfoCom World 2017

Info-Com awards '17:

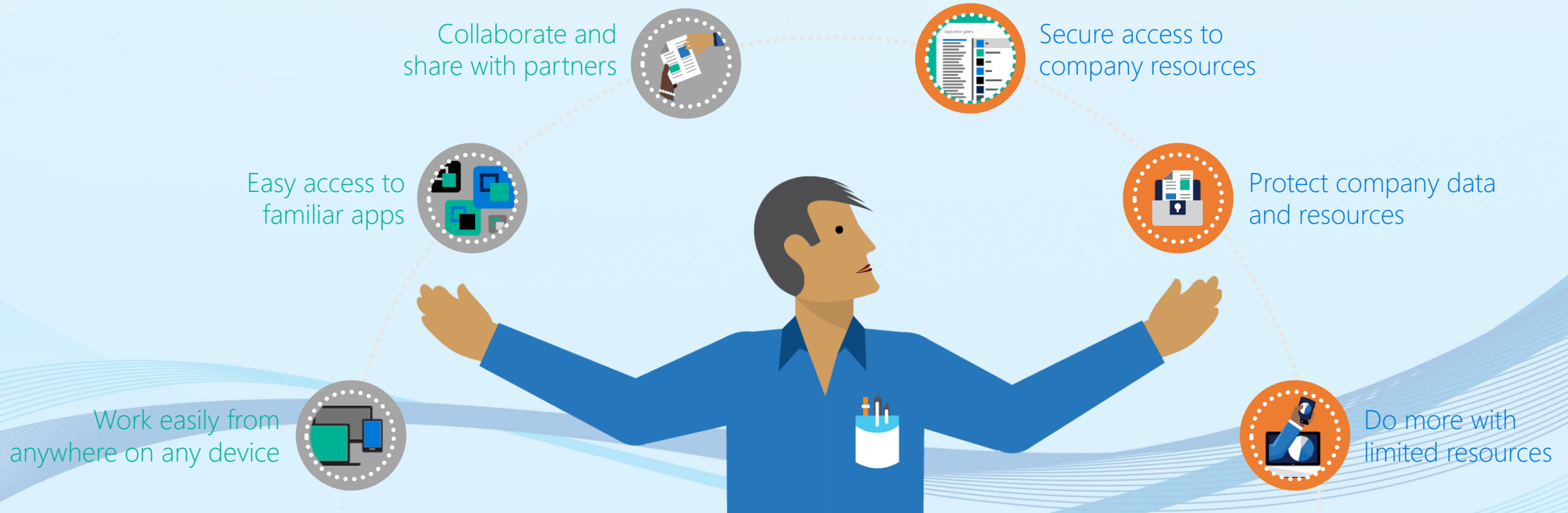
Office Line recognized as **“Enabler of Digital Transformation”** for its technological innovation and strategic leadership in the Digital era.



The working environment challenges

User expectations

IT challenges



How to empower users to be productive, while protecting the massive amounts of data flowing through your business ecosystem?


Identity is full of Constant Challenges ...

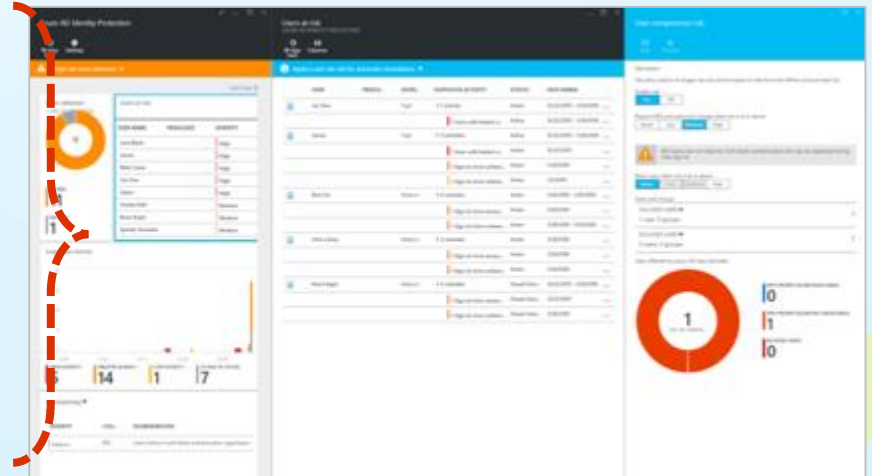
- Administering & Managing identity and user access to resources
- Securing Networks
- Managing Known & Unknown Threats
- Industry Governness & Compliance
- Encrypting communications and operation processes
- Dealing with Law Enforcement



Identity Protection

- Risk based Conditional Access automatically protects against suspicious logins and compromised credentials
- Detect and remediate configuration vulnerabilities to improve your security posture
- Gain insights from a consolidated view of machine learning based threat detection

-  Brute force attacks
-  Leaked credentials
-  Suspicious sign-in activities
-  Infected devices
-  Configuration vulnerabilities



MFA Challenge
Risky Logins

Change bad
credentials

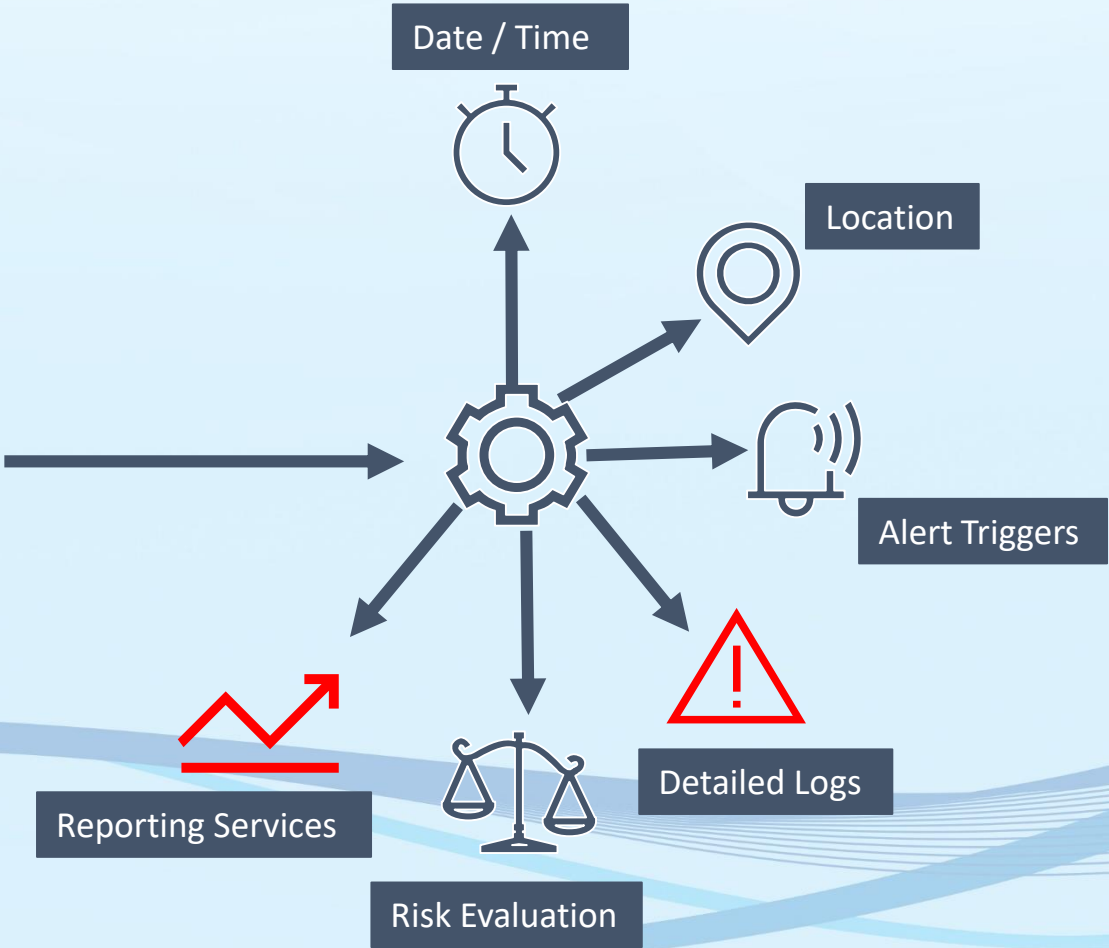
Block attacks



Identity Protection



User Logs in



Detailed Heuristics



Trust Decisions

Is *someone* there?

Presence vs authentication

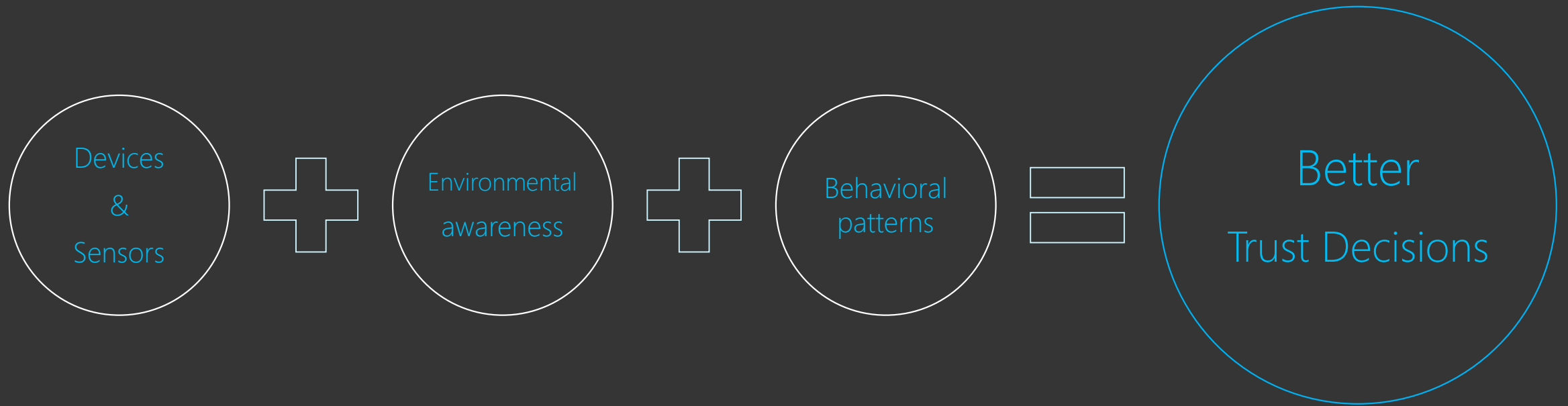
Is it *you*?

Authentication using multiple signals to ascertain a user's identity

Are you in a *trusted environment*?

Determine if your device is in a safe location by looking at Geolocation and wireless signals (Bluetooth, Wi-Fi, etc.)

Extending Identity Protection...



*At work, Maria can just sign in using **Face** because she is in a **trusted location**.*

*But when she is at a coffee shop, she needs to either have her **phone in proximity** or use her **PIN as a second factor** in order to unlock her PC.*

On the road to...

NO PASSWORDS

A photograph of a two-lane asphalt road stretching into the distance under a clear blue sky. The road is flanked by dry, scrubby vegetation and small hills. In the distance, several white wind turbines are visible on a ridge. In the foreground on the right, a large, rectangular, light blue road sign with a black border is mounted on two metal posts. The sign has the text "NO PASSWORDS" in bold, black, sans-serif capital letters. A yellow and blue striped guardrail runs along the right side of the road.

Address mobile productivity challenges

Productivity

Enable a mobile experience that works the way employees want it to.



Device choice



Easy access to resources



Self-service options



Familiar Office apps

Data Protection

Ensure that the right data protection is applied to the right scenarios.



User, device, app, file control



Conditional access



Protection after access

Management

Tools and services that empower IT pros to do strategically more with less.



Unified management



Cloud-based scalability and reliability



Deployment support



Areas of Focus

Intelligence powered insights

Reduce total cost of ownership

Comply with GDPR



THANK YOU



Gold Cloud Platform
Gold Small & Midmarket Cloud Solutions
Gold Midmarket Solution Provider
Gold Hosting
Gold Datacenter
Silver Cloud Productivity
Silver Collaboration and Content
Silver Devices and Deployment

