



# SECURITY FOR THE CONNECTED VESSEL

Nikos Kallergis  
InTTrust SA

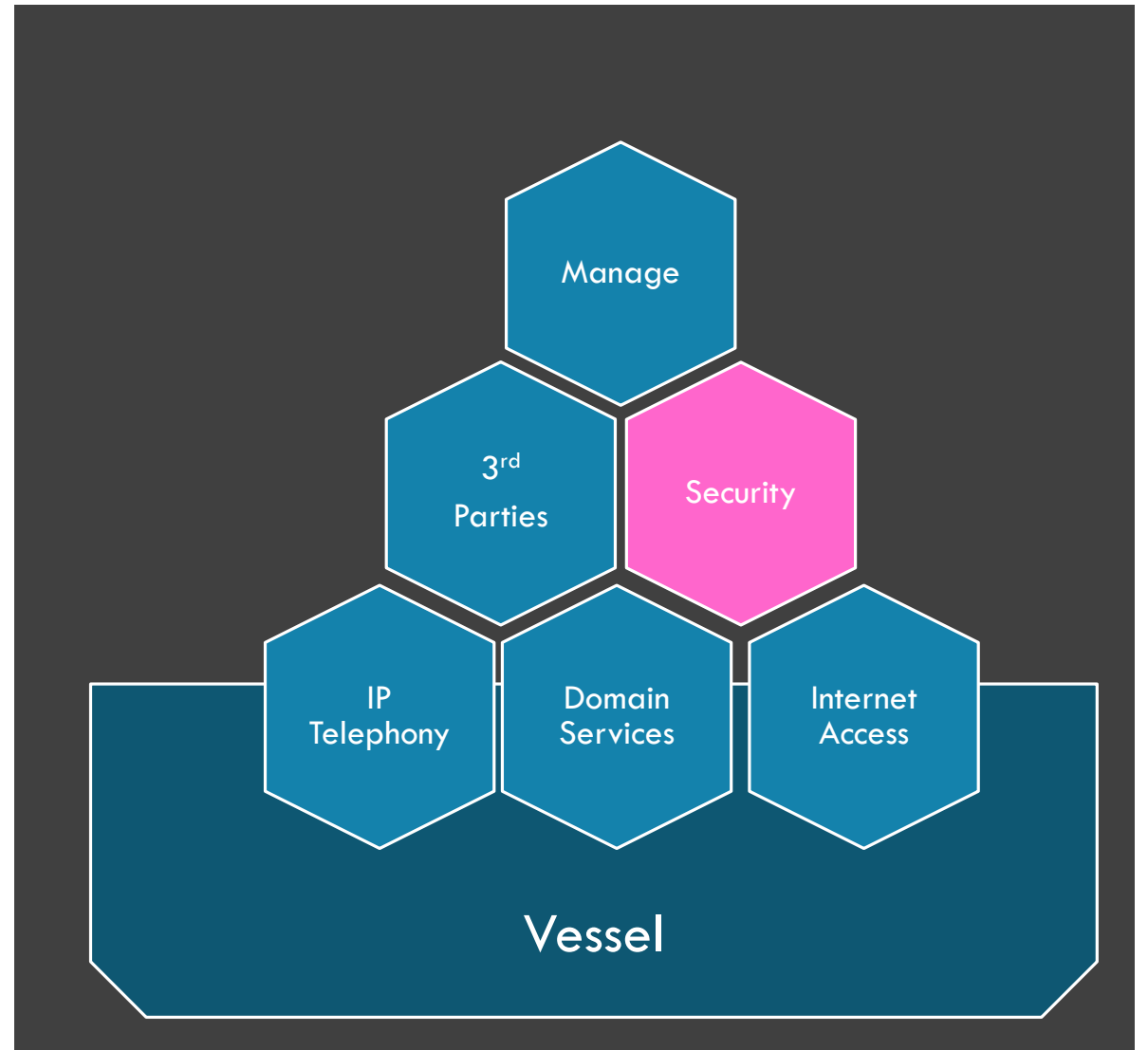
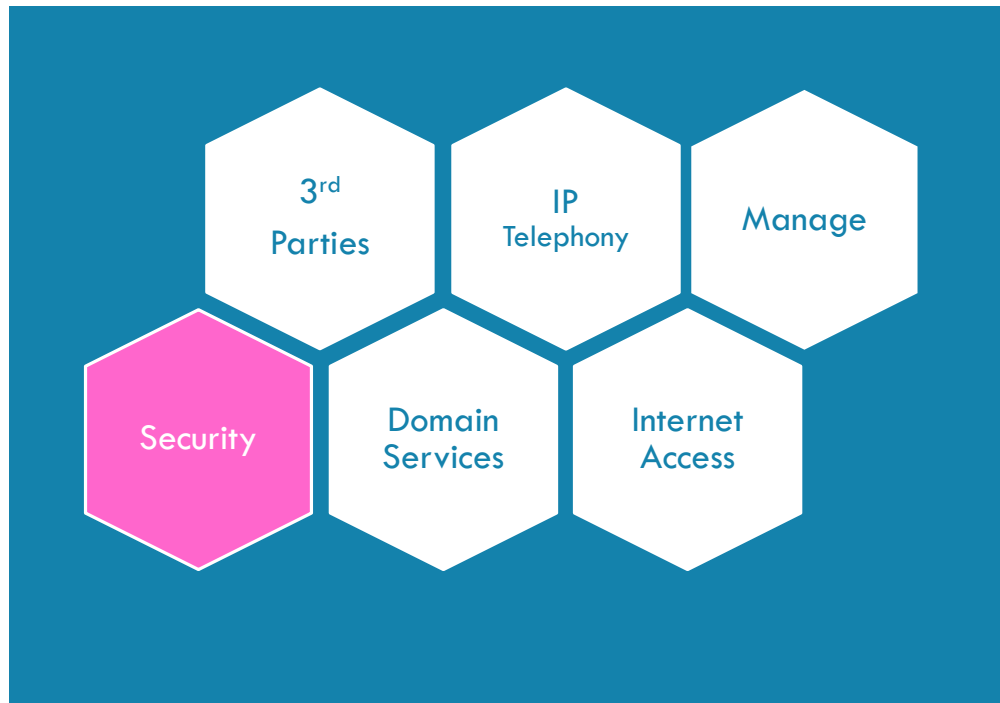


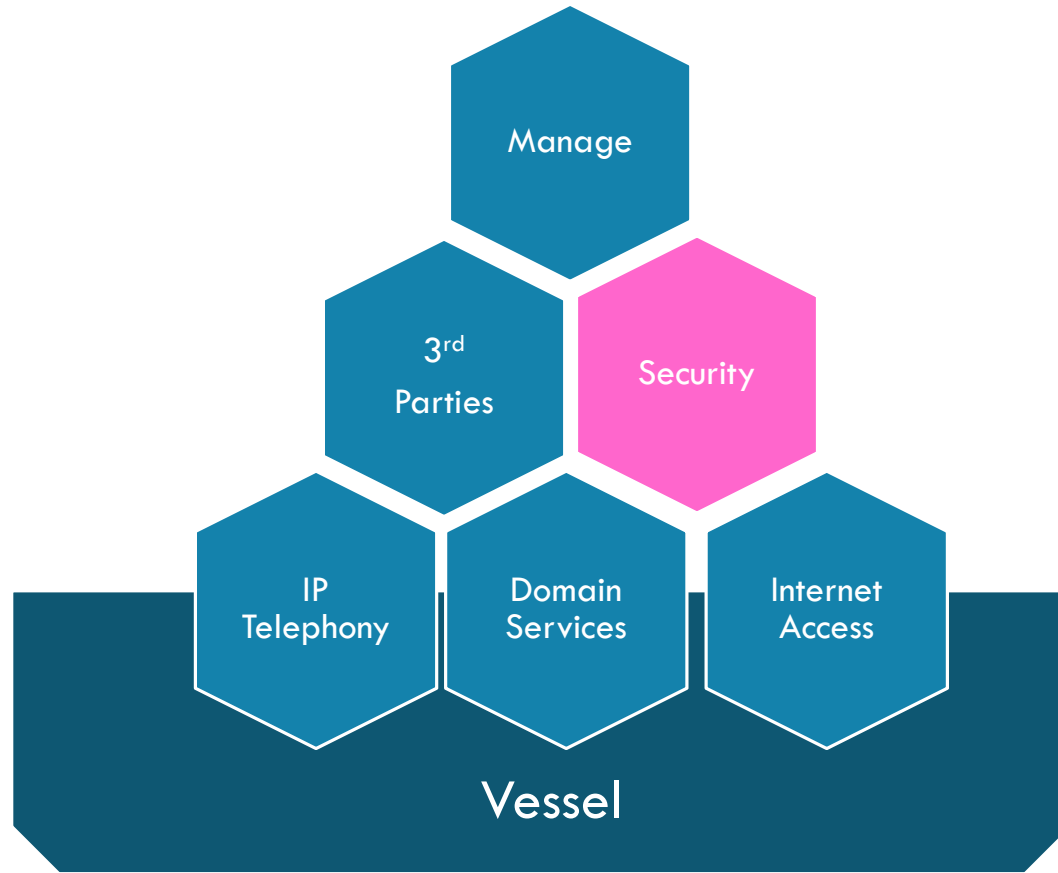
## MANIFESTATIONS OF THE PROBLEM

- Snowflake approach
- Resistance against change
- Third-party systems integration
- Lack of proper IT documentation
- REALLY high costs for comms (partly due to improper control)

# CORE OF THE PROBLEM

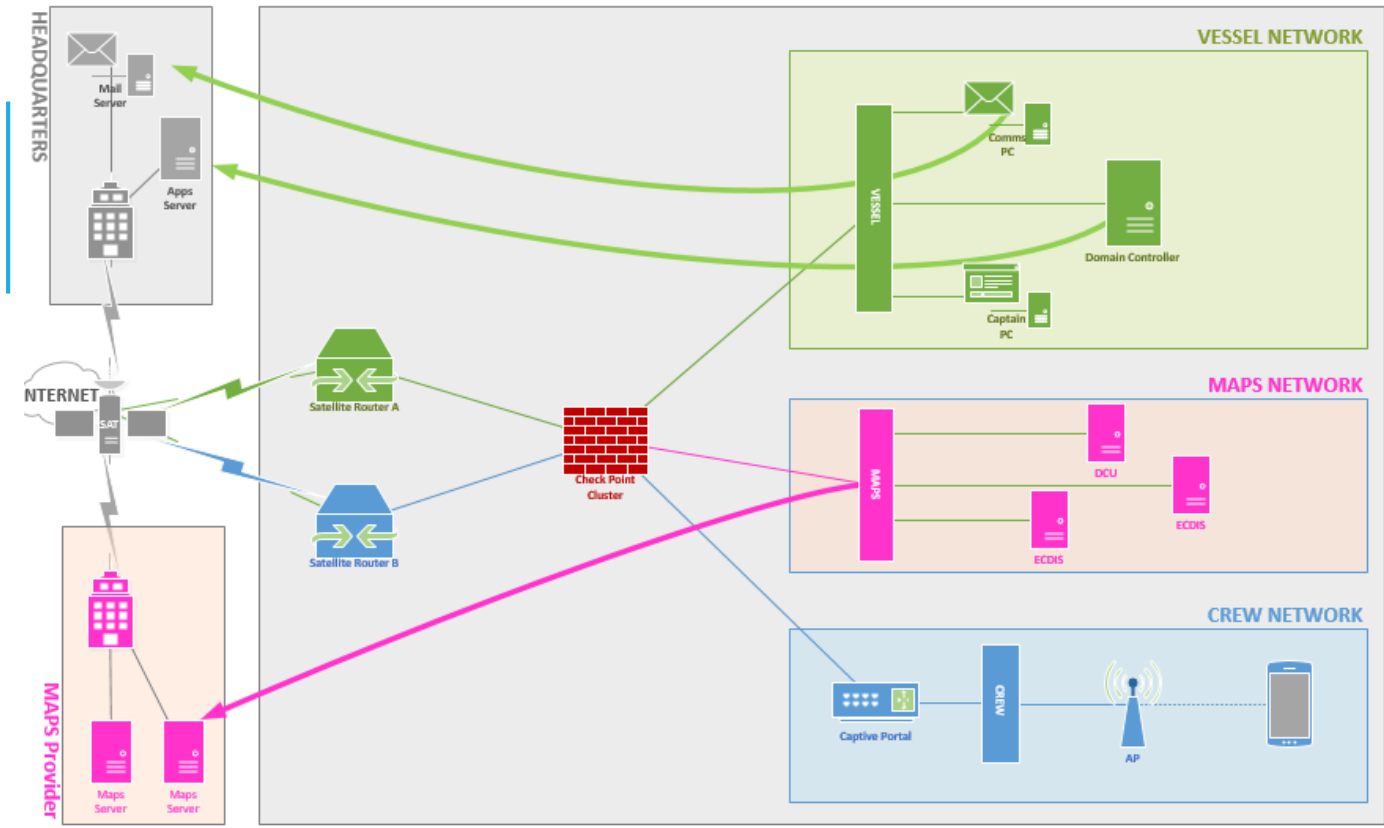
Branch site





**Vessels** rapidly transform to proper **branch sites** and need to be treated as such.

**CORE OF THE PROBLEM**



# ASPECTS OF THE SOLUTION

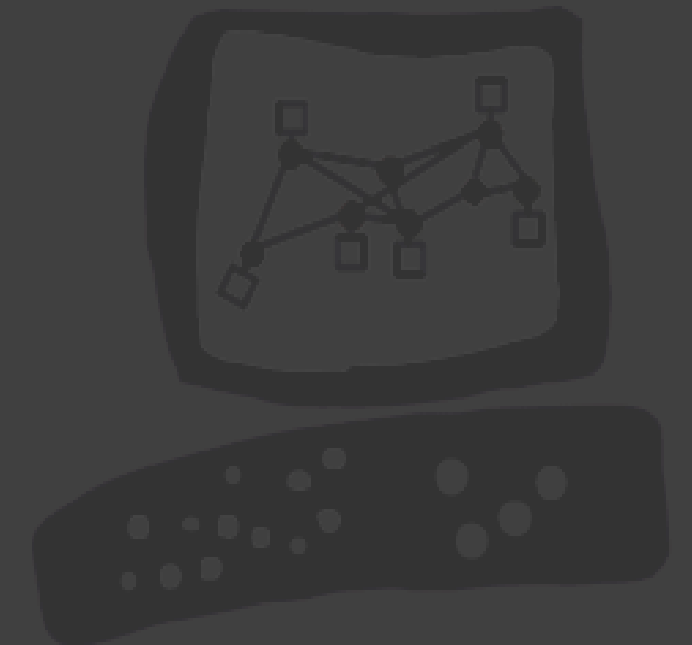
- Provide security & control
- Do not over-complicate management
- Create a flexible framework for expanding
- Make everything redundant
- Be able to support under any circumstances
- Respect the special nature of the environment

**Check Point**  
**Multi-layered**  
**Threat Prevention**



- Multi-layer security
- Enhanced visibility
- Hub & spoke architecture
- Flexible deployment

**CHECK POINT FOR THE WIN**




# INTRUST WITH CHECK POINT

## implemented

- firewalling
  - application control
  - URL filtering
  - QoS
  - IPS
- 
- The background of the 'implemented' section features a large, stylized blue shield with a white 'CP' logo in the center. The shield is set against a dark blue background with faint circuit-like patterns.

## scheduled

- antivirus
  - data loss prevention
  - identity awareness
  - hub & spoke architecture
- 
- The background of the 'scheduled' section features a dark grey background with a network diagram. The diagram shows a central node connected to several other nodes, with lines representing connections. Below the network diagram is a dark grey horizontal bar with several small, light grey circles.



# VESSELS A MANAGEMENT NIGHTMARE

**local management is mandatory** so it works in case of connectivity loss

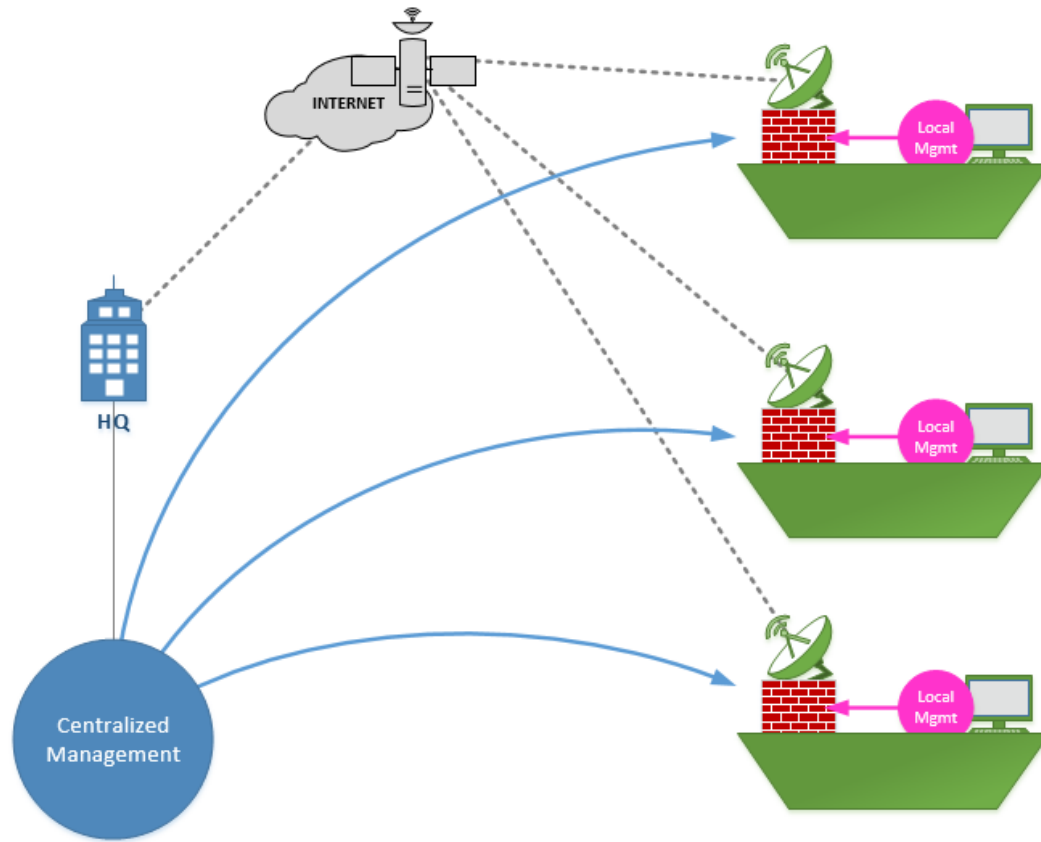
**centralized management** is an integral part of our homogenous approach





# INTTRUST SPECIAL SAUCE

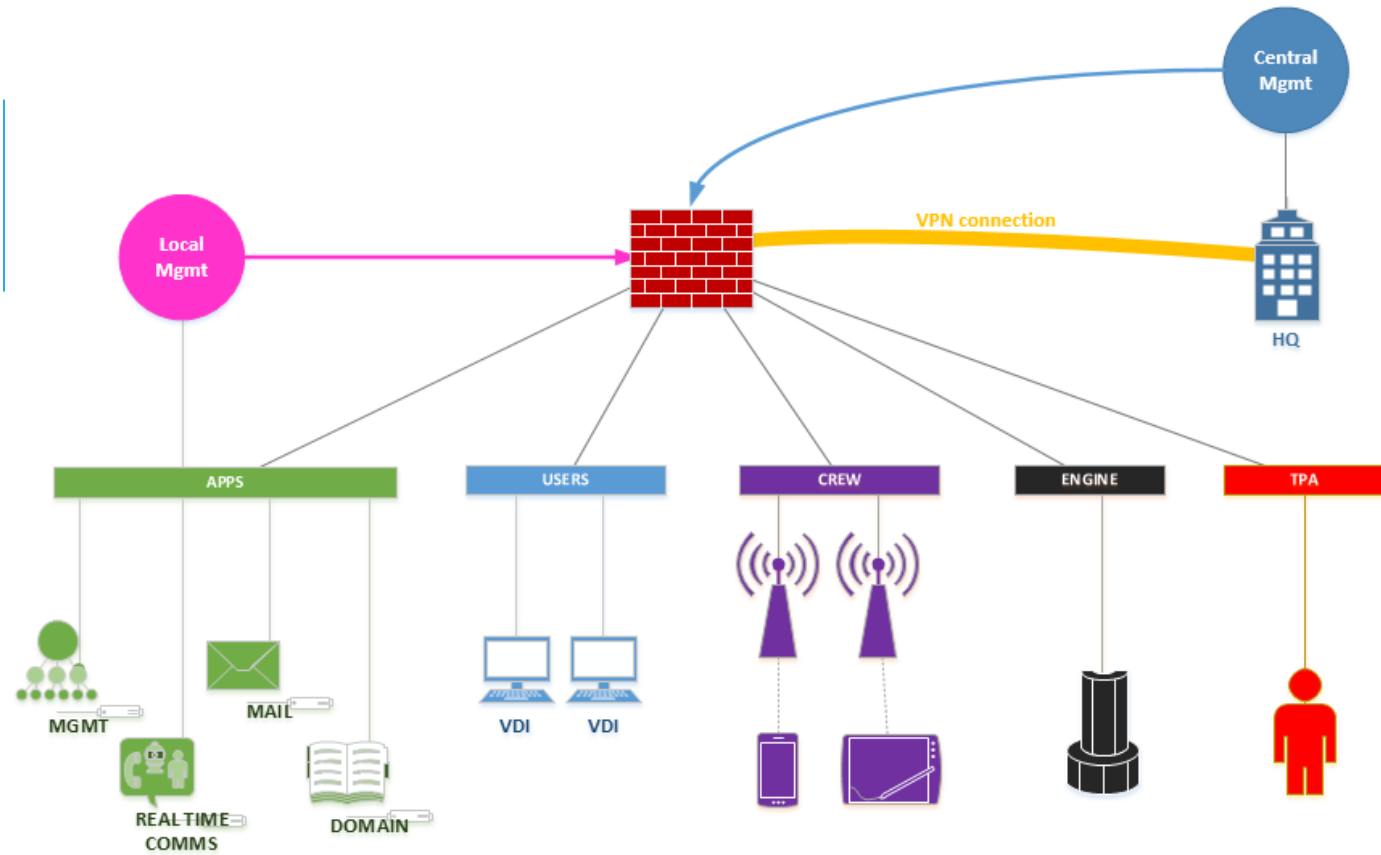
Given the special nature of a vessel, we wrap Check Point management with our own **special sauce** in order to be able to control it in a **centralized** fashion while retaining **local** administration.



# INTTRUST SPECIAL SAUCE

**local management** is performed via **Smart Dashboard** run on vessel's management station

**centralized management** is a custom web-based **InTTrust solution**: it runs via SSH & CPMI without the need to download large databases over slow and expensive satellite links



- **MINDSET:** change it
- **PACKAGE:** all-in-one
- **MAINTENANCE:** virtualize
- **MANAGEMENT:** easy but capable
- **REGULATION:** marine approved!

**INTTRUST  
OUR APPROACH**



Throughout the years, InTTrust has evolved following its customers strategies, delivering solutions that fit and delivering value and agility.

**INTTRUST**  
INFORMATION, TECHNOLOGY, TRUST



Throughout the years, InTTrust has evolved following its customers strategies, delivering solutions that fit and delivering value and agility.

**INTTRUST**  
**INFORMATION, TECHNOLOGY, TRUST**



**WWW.INTTRUST.GR**

We adapt to  
globalization and  
adopt the digital  
reinvention.