

Scaling up Security with Cloud IT Management and Future Trends



Andreas Karantonis
Marketing & Communications Director

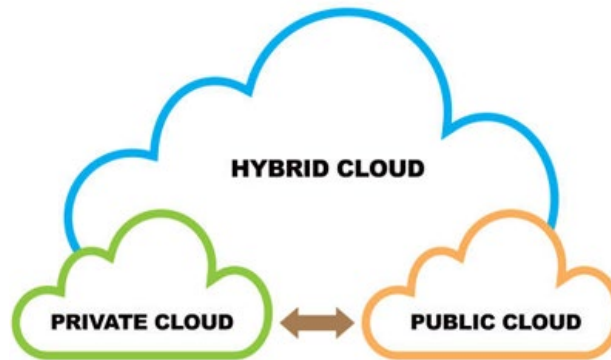


CYSOFT
Securing Systems Effectively



Cloud IT Management

- Hybrid Cloud
- Private Cloud
- Public Cloud



Cloud IT Management

- Helpdesk Management
- Assets & CMDB
- Desktop & Mobile Device Management
- Identity & Access Management
- SIEM
- Network, Server, and Application Monitoring



Augment Endpoint Security

- Increasing Number of Endpoints
- Traditional AV, File Scanning, and Security Solutions are no match
- 37% of the respondents didn't use any EPS
- Complexity of Deploying, Managing, and using Security Solutions



Vulnerability Assessment & Threat Mitigation

- ❖ Scan the Endpoints
 - Early Identification of Imminently Exploitable Threats
 - Putting the Vulnerabilities in context
 - Prioritizing Response
 - Avoiding hefty fines for not conforming compliance
 - Patching might interfere with the on-going Operations of the Business



Security Configuration Management

- Firewall Audit
- Password Policies
- Microsoft Office Security
- Bitlocker Encryption
- Secure Remote Desktop Sharing
- Manage Networks Shares
- User Account Management
- User Account Control
- Prevent Browser-based Attacks



Enterprise Patch Management

- Automate
- Cross-Platform Support
- Third Party Application Patching
- Flexible Deployment Policies
- Test and Approve Patches



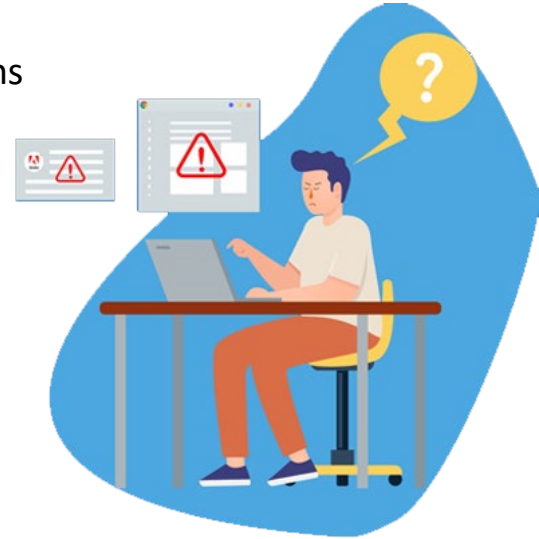
Application Control

- Application White/Blacklisting
- Remove Admin Access
- Just-in-Time Access
- Child Process Control
- Application Specific Privileged Access



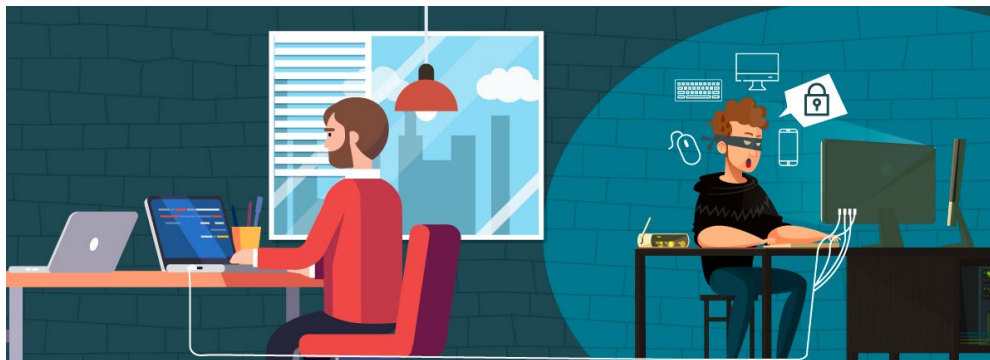
Endpoint Privilege Management

- Zero Trust Model
- Enforce Role-based Privileges
- Allow Self-Elevation of Privileges to all Whitelisted Applications
- Remove Unnecessary Local Administrator Accounts



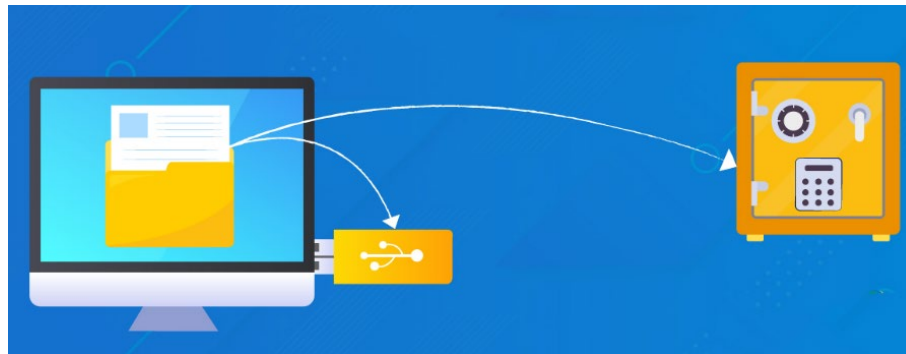
Device Control

- Device and Port Control
- File Access Control
- File Transfer Control
- Trusted Device List
- Temporary Access
- File Shadowing
- File Tracing



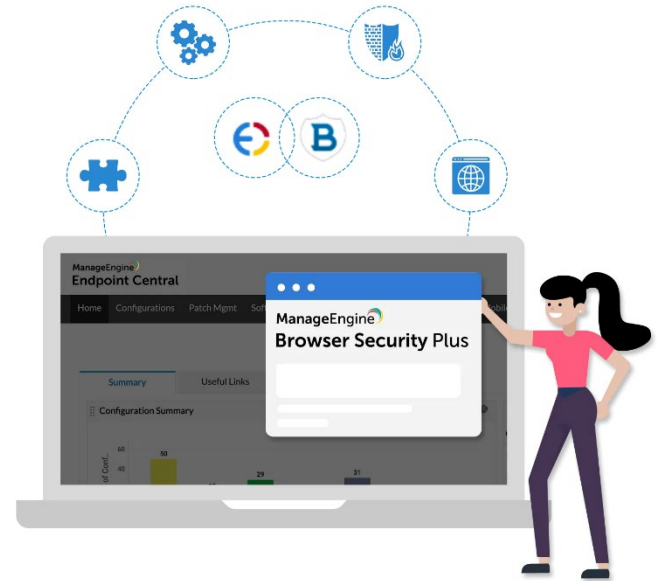
File Shadowing

- ❖ Data Mirroring
- Identify Actual Content of Stolen Files
- Easily Restore Business-Critical Data
- Warn Impacted Users



Browser Security

- ❖ Manage and Secure
 - Gain Complete Visibility
 - Trusted/Approved Browsers
 - Policy Configuration
 - Exercise Control Over Extensions and Plugins
 - Compliance Status
 - Legacy Web Applications
 - Assign Specific Java Versions
 - Enforce Kiosk Mode
 - Securely Handle Enterprise Sites
 - Control Access to the Internet
 - Restrict File Downloads



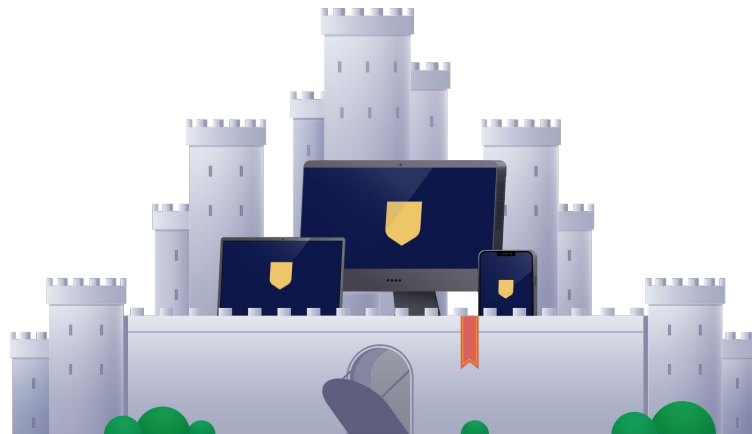
Mobile Security Management

- Remote Wipe Device Data
- Detect and Report High Risk and Non-Compliant Devices
- Run Only Enterprise Approved Apps
- Separate Corporate Apps From Personal Ones
- Ensure Devices are Compliant With Policies for Wi-Fi, VPN, etc.



SIEM

- Log Storage Spending
- Audit Security Events
- Access Log Data
- Scale Your Network Architecture





Da

- Augmented and Predictive Analytics
- Collaborative Analysis
- Rich Visualization
- Smart Alerts



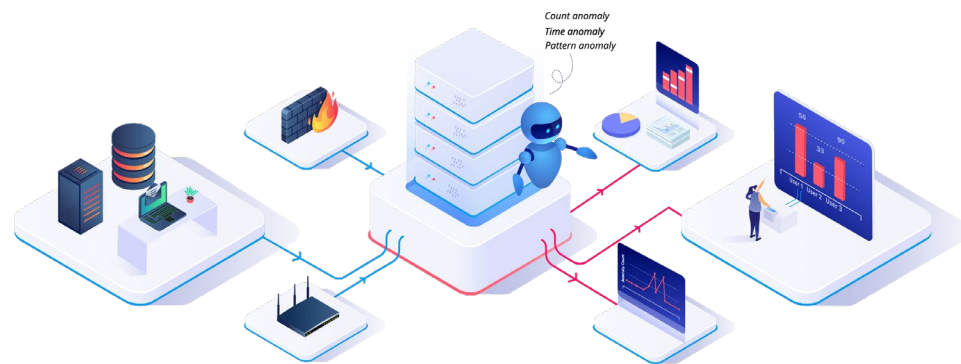
Privileged Access Management

- Enterprise Credential Vault
- Secure Remote Access
- Just-in-Time Privilege Elevation
- Privileged User Behavior Analytics
- DevOps Protection
- Application Credential Security



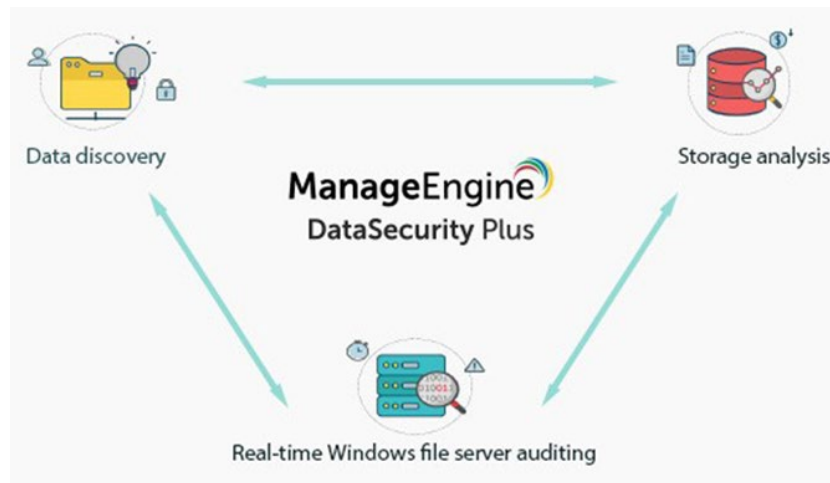
UEBA

- Insider Threats
- Account Compromise
- Data Exfiltration



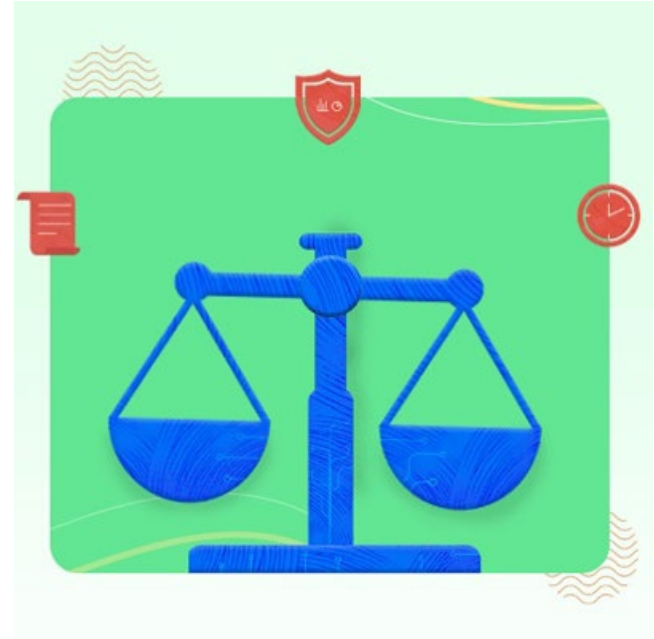
Data Security

- Discover Data
- Audit File Servers
- Analyze Storage



Integrated Compliance

- PCI DSS
- SOX
- HIPAA
- GDPR
- ISO 27001





Bringing IT together

ManageEngine crafts comprehensive IT management software for all your business needs.

www.manageengine.eu

In partnership with



Service management

- Full-stack ITSM suite
- IT asset management with CMDB
- Knowledge base with user self-service
- Built-in and custom workflows
- Orchestration of all IT management functions
- Service management for all departments
- Reporting and analytics

Identity & access management

- Identity governance and administration
- Privileged identity and access management
- AD and Azure AD management and auditing
- SSO for on-premises and cloud apps with MFA
- Password self-service and sync
- Microsoft 365 & Exchange management and auditing
- AD & Exchange -backup and recovery
- SSH and SSL certificate management

Security information & event management

- Unified SIEM for cloud and on-premises
- AI driven user and entity behavior analytics
- Firewall log analytics
- Data leakage prevention and risk assessment
- Regulatory and privacy compliance

ManageEngine

BRINGING IT TOGETHER



Available for

Enterprise IT
Managed service providers (MSPs)

as

Self hosted on-premises
Zoho Cloud-native
Self hosted in public cloud (AWS, Azure)

Unified endpoint management & security

- Desktop and mobile device management
- Patch management
- Endpoint device security
- OS and software deployment
- Remote desktop support
- Web browser security
- Monitoring and control of peripheral devices

IT operations management

- Network, server and application performance monitoring
- Bandwidth monitoring with traffic analysis
- Network change & configuration management
- Application discovery & dependency mapping
- Cloud cost and infrastructure monitoring
- End user experience monitoring
- AIOps

Advanced IT analytics

- Self-service IT analytics
- Data visualization and business intelligence for IT
- Hundreds of built-in reports and dashboards
- Instant, flexible report creation
- Out of the box support for multiple data sources

ManageEngine is the enterprise IT Management software division of ZOH O Corporation

Privately held and profitable since inception



(Est. 1996)



(Est. 1996)

Enterprise Internet of Things &
Unified Network Management
Solutions



(Est. 2002)

Enterprise
IT Management
Solutions



(Est. 2005)

Application for
Business, Collaboration,
and Productivity



(Est. 2021)

Workflow orchestration
software



Teams spread over 18 Offices



A man with glasses and a beard is smiling while talking on a black office phone. He is wearing a light-colored sweater over a collared shirt. He is sitting at a desk with a computer monitor and some papers. The background is slightly blurred, showing an office environment with a bulletin board and some colorful sticky notes.

Over 3 Million IT Admins

in **180,000+ companies**, across **190 countries**, use our software to manage their **complex, multi-vendor**, and **hybrid IT infrastructures**.

The number '20' is rendered in a large, bold, gold-colored font with a slight 3D effect and a shadow. It is positioned above the word 'YEARS'.

YEARS

of

ManageEngine

Thank you!

Email me: ask@cysoft.gr