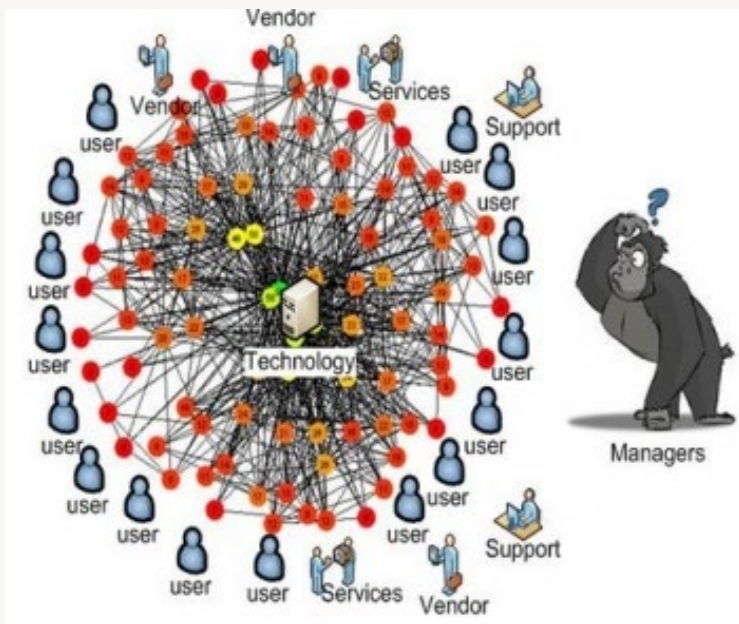


# Securing Modern Business with Next - Gen Operations

Loizos Mikallou - Senior IT Engineer  
Channel IT Ltd.



# Introduction to Modern Business Challenges



## Key Challenges in the Digital Age

Rapid digital transformation is reshaping business landscapes worldwide, creating a need for continuous adaptation and innovation.

- Increased cybersecurity threats, from ransomware to data breaches, poses significant risks to businesses and organizations.

The complexity of IT environments, including hybrid infrastructures and diverse endpoints, increases the challenges of management and security.

# Introduction to ManageEngine



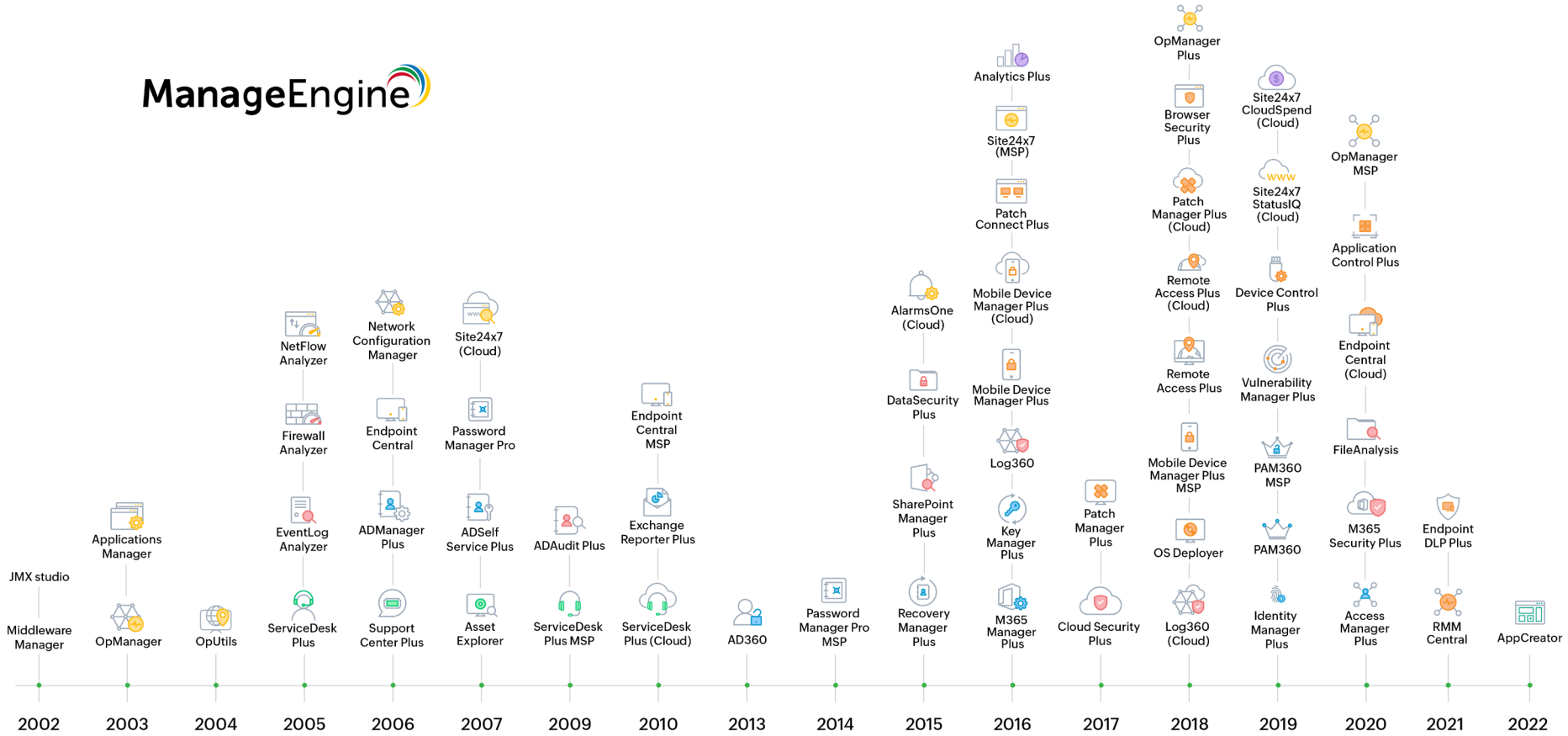
## Overview of ManageEngine

∞. á á∅ctÁ/tŪ Ĥ/Ōt đŪĤ tŌ. ĀĒ á Ĭ Ū Ā Ĥ/ Ĩ Π∅c Ū Ḃ  
ŌtŪtΦ Ō Ū tŪá ĩ v /c ăĀ đŪ

¥ tŪtΦ ~Ū∅đŪ ăΠĪ/ t văŌ./ Ĭ Ū c ĩ c ĩ ăΠ./ăá v á đŪ á  
ă t á á ĩ Ĭ vĤ Ā Ūt ăΠŌăá/Ūζ đŪ

→ăŌ ḂA¥ ă ĩ Ūá. ăđŪ ĩ v /c tŪá ./c đŪ á t v ĩ  
ŌtŪtΦ Ō Ū ¥ tŪtΦ ~Ū∅đŪ vă ĩ / Ĭ Π Ā . ĩ v / Ō ăΠḂ  
ă. ĩ /t đŪ

# ManageEngine





# The Role of ITSM in Modern IT Operations

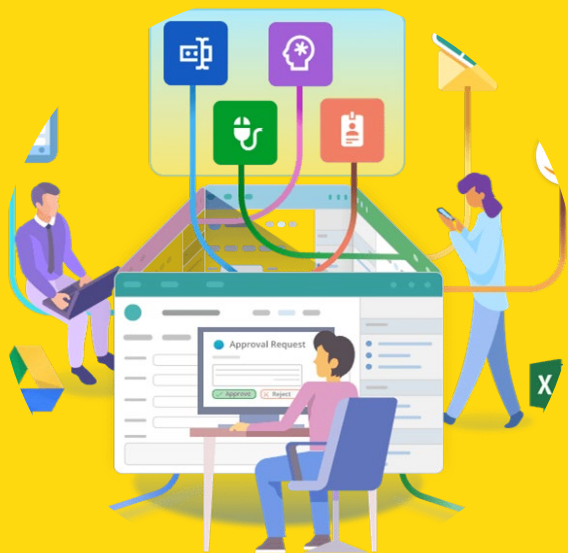
## Key Features of ServiceDesk Plus

Flexible capabilities

- Automating support tasks

Enhancing user experience

Ensuring compliance



# Unified Endpoint Management

## Unified Endpoint Management

- Provides a centralized platform to manage security policies across all endpoints.  
Ensures consistency and efficiency in security management.  
Simplifies monitoring and threat response for diverse endpoint devices.



# ManageEngine

# PAM360



## Securing Privileged Access with PAM 360

### Key Features of PAM360

- Just-In-Time Privilege Elevation
- Session Recording and Monitoring
- Password Vaulting and Rotation

# Streamlining Active Directory Management with ADManager

5" —t /" ăΠ! s ¥ t Ũt Φ"/

Simplifies AD management and user provisioning processes

- Ensures compliance with security policies and regulatory standards

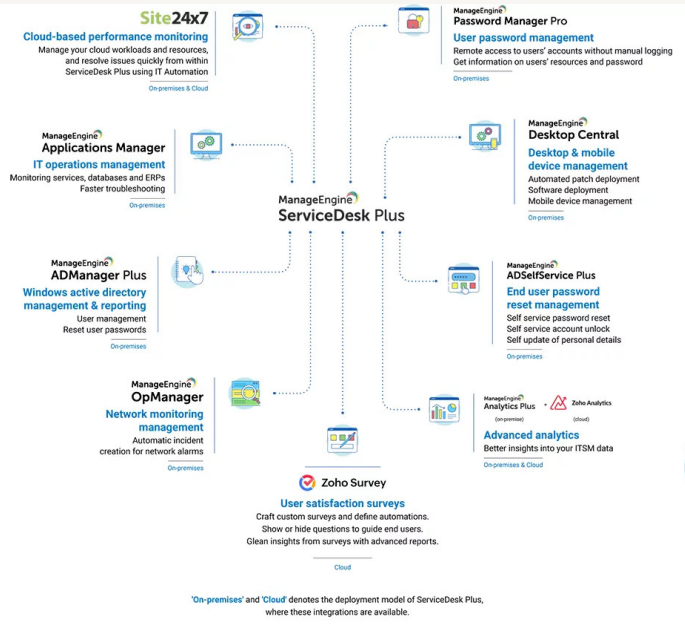
Enhances security with features like role-based access control and password management policies

ManageEngine   
**ADManager Plus**



# Integrating ManageEngine Products for a Unified Posture

## Benefits of Integration



Maximizes efficiency by integrating multiple products functionalities

- Enhances operational efficiency through centralized procedures

Improves overall compliance with security standards and regulations

Enables seamless data sharing and communication between components

# Workshop - Real World Application

Real-world  
Application of  
ManageEngine  
Products

Brief overview of a real -world application that showcased the effectiveness of ManageEngine products.

- Introduction to the challenges faced in IT operations and the solutions implemented using ManageEngine products.

Description of the outcomes and benefits, including improved security, efficiency, and compliance.

# Thank You

ManageEngine



## Contact Information

—ă/ Ờă/ đầ/ Ờt ặữ . Ất Ầ c c Ờ ✕ t Ừt Ồ ~ Ồđ Ồ Ồ c Ồ ặ/  
vặ Ồ t v ặ / . . ặ/ Ồ t Ờ

Ờ . . . . . Ờ t Ừt Ồ ~ Ồđ Ồ vặ Ờ

. . . ặ/ v Ờ Ồ Ồ Ấc vặ Ờ

Ồ Ồ/ Ồ Ồ á . t/ Ồ t/ Ồ Ồ Ồvặ / t Ồ á ặ / t v Ồặ Ồ / á t Ồ á  
. / ặ á v á Ồ ặ Ồ / t ặ Ồ ặ / Ồ / Ồ / đặ Ồ Ồ

—ă Ồ ✕ t Ừt Ồ ~ Ồđ Ồ ặ Ồ ặ v đ Ồ Ồ á đ Ồ / Ồ Ồ Ồ . á t Ồ t Ồ á  
đ đ Ồ đ ặ Ồ Ồ t Ồ t Ồ Ồ Ồ Ồ ặ Ồ ặ Ồ